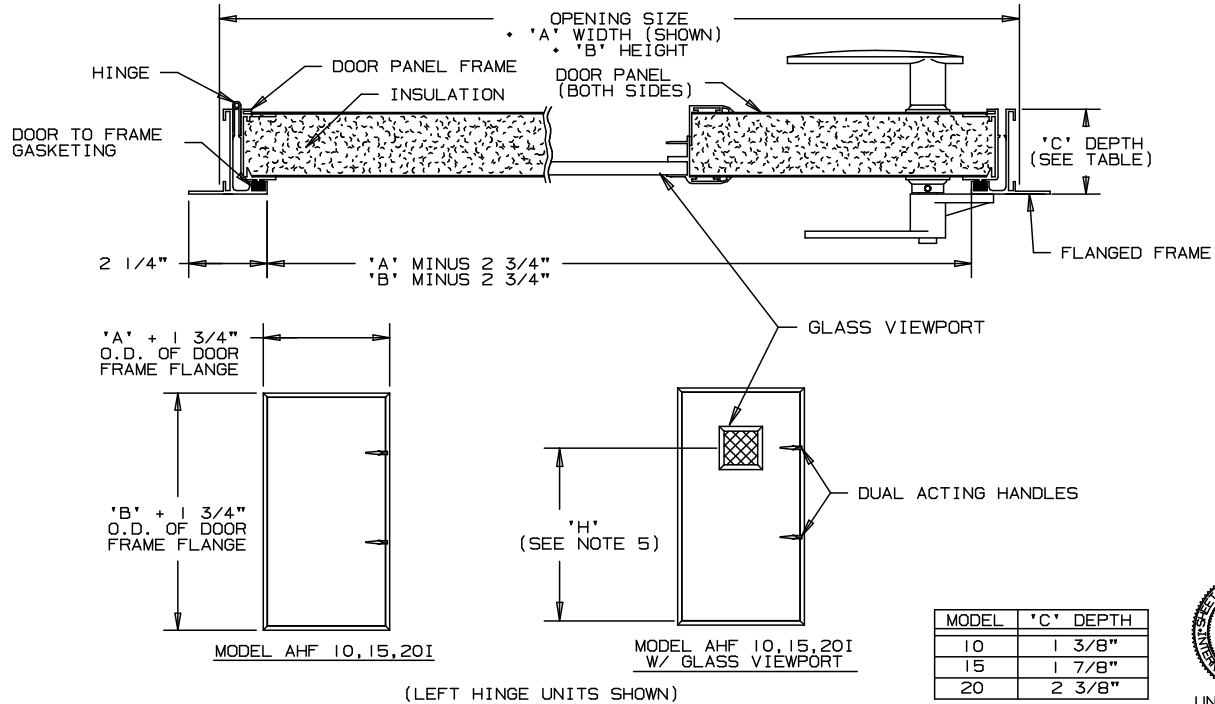


ARROW (IN-SWING ONLY) STANDARD ACCESS DOOR

TYPE AHF 10, 15, 20




SCHEDULE

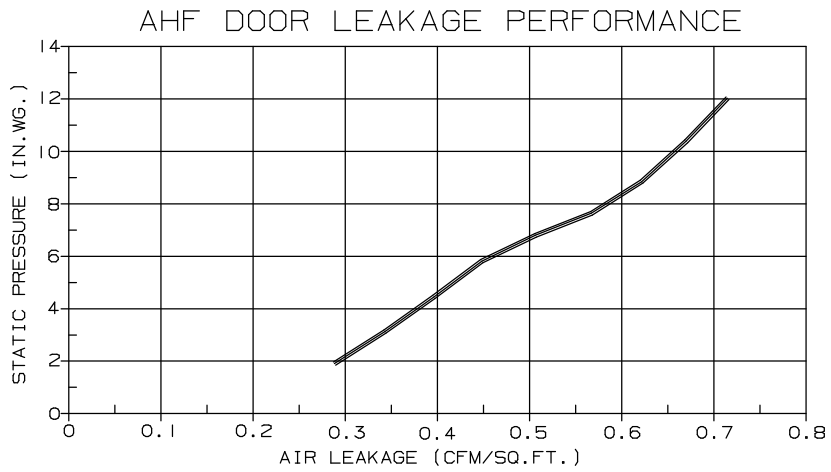
ITEM	QTY	MODEL					OPENING SIZE		NON-STANDARD VIEWPORT LOCATION ** (SEE NOTE 5) 'H' (WHEN REQ'D)	IDENTIFICATION
		AHF	10	15	20	I	**VIEWPORT L/H	R/H		
		AHF				I				
		AHF				I				

NOTES

- HINGE ALWAYS FURNISHED ON 'B' HEIGHT DIMENSION.
- (G) DESIGNATES DOORS WITH GLASS VIEWPORTS SPECIFY (L/H) LEFT HAND OR (R/H) RIGHT HAND HINGE WHEN VIEWING FROM THE OUTSIDE.
- 9" x 9" GLASS VIEWPORT NOT AVAILABLE ON UNITS UNDER 18" IN WIDTH AND 12" x 12" VIEWPORTS NOT AVAILABLE ON UNITS UNDER 21" IN WIDTH.
- UNLESS OTHERWISE SPECIFIED, DOOR WILL BE FABRICATED 1/4" UNDER LISTED SIZE. DIMENSIONAL TOLERANCE IS ±.075.
- UNLESS OTHERWISE SPECIFIED, STANDARD VIEWPORT LOCATIONS ARE AS FOLLOWS:
'H'='B'-11" (±1") WHEN 'B' IS 20" TO 60"
'H'=48" (±1") WHEN 'B' IS GREATER THAN 60"
WHEN SPECIFYING NON-STANDARD VIEWPORT LOCATIONS, 'H' CANNOT BE GREATER THAN 'B'-11"
- MINIMUM SIZE 12" WIDE x 12" HIGH
MAXIMUM SIZE 48" WIDE x 96" HIGH
(WIDTH CANNOT EXCEED 2x HEIGHT)
- OPTIONAL MATERIALS AVAILABLE FOR THE FOLLOWING COMPONENTS:
DOOR PANELS-BONDERIZED STEEL, ALUMINUM OR STAINLESS STEEL
VIEWPORT GLASS-SINGLE PANE: PLEXIGLASS
DOUBLE PANE: 1/4" WIRE
1/4" WIRE THERMAL PANE
HANDLES-CHROME PLATED
- PLEASE REFER TO INSTALLATION INSTRUCTIONS FOR MOUNTING OF HANDLES, AND DOOR ASSEMBLY MOUNTING.
- IN-SWING DOORS ARE RECOMMENDED FOR POSITIVE PRESSURES, OUT-SWING DOORS ARE RECOMMENDED FOR NEGATIVE PRESSURES

SPECIFICATIONS

SPECIFICATIONS			PROJECT/LOCATION
FLANGED FRAME .OBO-6063-T5 EXTRUDED ALUMINUM	DOOR PANELS 20 GA. GALVANIZED STEEL	HINGE STAINLESS STEEL CONTINUOUS TYPE	ARCHITECT/ENGINEER
DOOR PANEL FRAME .OBO-6063-T5 EXTRUDED ALUMINUM	INSULATION 2.25 LB. DENSITY POLYURETHANE FOAM	VIEWPORT GLASS (SINGLE PANE) 1/4" WIRE (9"x9" STANDARD) (12"x12" OPTIONAL)	CONTRACTOR
	HANDLES DUAL ACTING DIE CAST ZINC	FINISH MILL	SALES ENGINEER
	GASKET CONTINUOUS LENGTH EXTRUDED FOAMED SANTOPRENE		 ARROW UNITED INDUSTRIES A DIVISION OF MESTEK, INC. 314 RIVERSIDE DRIVE WYALUSING, PA 18853 TEL: (570) 746-1888 FAX: (570) 746-9286
ACCESS DOOR-MODELS AHF 10, 15, 20			DRAWN BY: LCC DATE: 2/12/02 DRAWING NO.: 9-101

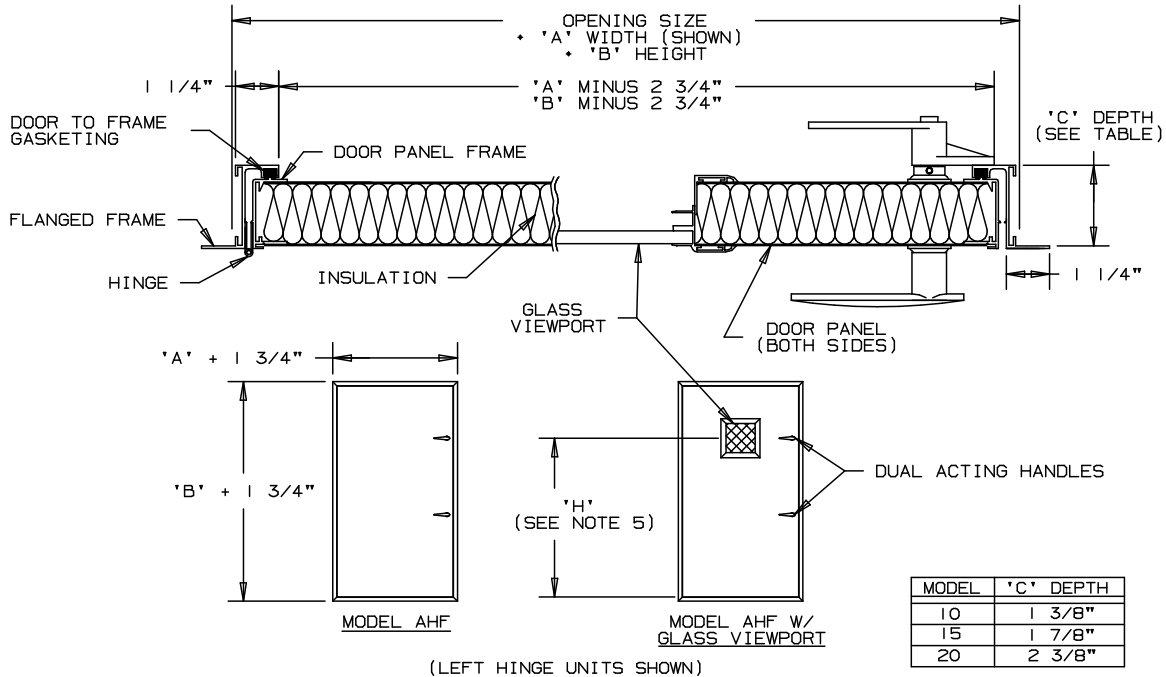


MODEL AHF-10 & AHF-20 WATER LEAKAGE PERFORMANCE

WATER LEAKAGE RESULTS ARE BASED UPON TESTING PER ASTM E 331-86 "WATER PENETRATION OF EXTERIOR WINDOWS, CURTAIN WALLS, AND DOORS BY A UNIFORM STATIC AIR PRESSURE DIFFERENCE". THE TESTS CONSISTED OF MOUNTED DOORS UNDER A PRESSURE DIFFERENCE OF 2" WG AND SUBJECTING THEM TO A UNIFORM WATER SPRAY FOR 15 MINUTES. THE SPRAY WAS EQUIVALENT TO A TORRENTIAL RAINFALL RATE OF 8 INCHES/HOUR. OVER THE 15 MINUTE PERIOD MODEL AHF-10 AND AHF-20 (24"x60") DOORS ALLOWED APPROXIMATELY 0.4 GALLONS OF WATER PENETRATION (3.5 FL OZ./MIN.).

ARROW (OUT-SWING ONLY) STANDARD ACCESS DOOR

TYPE AHF



SCHEDULE

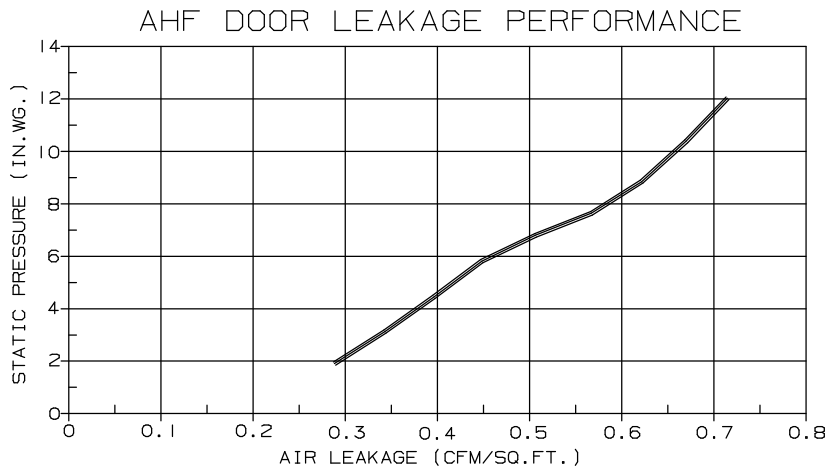
ITEM	QTY	MODEL				OPENING SIZE		NON-STANDARD VIEWPORT LOCATION ** (SEE NOTE 5) 'H' (WHEN REQ'D)	IDENTIFICATION
		AHF	10	15	20	**VIEWPORT L/H R/H	'A' WIDTH		
		AHF							
		AHF							

NOTES

- HINGE ALWAYS FURNISHED ON 'B' HEIGHT DIMENSION.
- (G) DESIGNATES DOORS WITH GLASS VIEWPORTS SPECIFY (L/H) LEFT HAND OR (R/H) RIGHT HAND HINGE WHEN VIEWING FROM THE OUTSIDE.
- 9" x 9" GLASS VIEWPORT NOT AVAILABLE ON UNITS UNDER 18" IN WIDTH AND 12" x 12" VIEWPORTS NOT AVAILABLE ON UNITS UNDER 21" IN WIDTH.
- UNLESS OTHERWISE SPECIFIED, DOOR WILL BE FABRICATED 1/4" UNDER LISTED SIZE. DIMENSIONAL TOLERANCE IS ±.075.
- UNLESS OTHERWISE SPECIFIED, STANDARD VIEWPORT LOCATIONS ARE AS FOLLOWS:
'H' = 'B' - 11" (±1") WHEN 'B' IS 20" TO 60"
'H' = 48" (±1") WHEN 'B' IS GREATER THAN 60"
WHEN SPECIFYING NON-STANDARD VIEWPORT LOCATIONS, 'H' CANNOT BE GREATER THAN 'B' - 11"
- MINIMUM SIZE 12" WIDE x 12" HIGH
MAXIMUM SIZE 48" WIDE x 96" HIGH
(WIDTH CANNOT EXCEED 2x HEIGHT)
- OPTIONAL MATERIALS AVAILABLE FOR THE FOLLOWING COMPONENTS:
DOOR PANELS-BONDERIZED STEEL, ALUMINUM OR STAINLESS STEEL
VIEWPORT GLASS-SINGLE PANE: PLEXIGLASS
DOUBLE PANE: 1/4" WIRE
1/4" WIRE THERMAL PANE
HANDLES-CHROME PLATED
- PLEASE REFER TO INSTALLATION INSTRUCTIONS FOR MOUNTING OF HANDLES, AND DOOR ASSEMBLY MOUNTING.
- IN-SWING DOORS ARE RECOMMENDED FOR POSITIVE PRESSURES, OUT-SWING DOORS ARE RECOMMENDED FOR NEGATIVE PRESSURES

SPECIFICATIONS

SPECIFICATIONS			PROJECT/LOCATION
FLANGED FRAME .080-6063-T5 EXTRUDED ALUMINUM	DOOR PANELS 20 GA. GALVANIZED STEEL	HINGE STAINLESS STEEL CONTINUOUS TYPE	ARCHITECT/ENGINEER
DOOR PANEL FRAME .080-6063-T5 EXTRUDED ALUMINUM	INSULATION 2.25 LB. DENSITY POLYURETHANE FOAM	VIEWPORT GLASS (SINGLE PANE) 1/4" WIRE (9"x9" STANDARD) (12"x12" OPTIONAL)	CONTRACTOR
	HANDLES DUAL ACTING DIE CAST ZINC	FINISH MILL	SALES ENGINEER
	GASKET CONTINUOUS LENGTH EXTRUDED FOAMED SANTOPRENE		ARROW UNITED INDUSTRIES A DIVISION OF MESTEK, INC. 314 RIVERSIDE DRIVE WYALUSING, PA 18853 TEL: (570) 746-1888 FAX: (570) 746-9286
ACCESS DOOR-MODELS AHF 10, 15, 20			DRAWN BY: LCC DATE: 2/11/02 DRAWING NO.: 9-100



MODEL AHF-10 & AHF-20 WATER LEAKAGE PERFORMANCE

WATER LEAKAGE RESULTS ARE BASED UPON TESTING PER ASTM E 331-86 "WATER PENETRATION OF EXTERIOR WINDOWS, CURTAIN WALLS, AND DOORS BY A UNIFORM STATIC AIR PRESSURE DIFFERENCE". THE TESTS CONSISTED OF MOUNTED DOORS UNDER A PRESSURE DIFFERENCE OF 2" WG AND SUBJECTING THEM TO A UNIFORM WATER SPRAY FOR 15 MINUTES. THE SPRAY WAS EQUIVALENT TO A TORRENTIAL RAINFALL RATE OF 8 INCHES/HOUR. OVER THE 15 MINUTE PERIOD MODEL AHF-10 AND AHF-20 (24"x60") DOORS ALLOWED APPROXIMATELY 0.4 GALLONS OF WATER PENETRATION (3.5 FL OZ./MIN.).