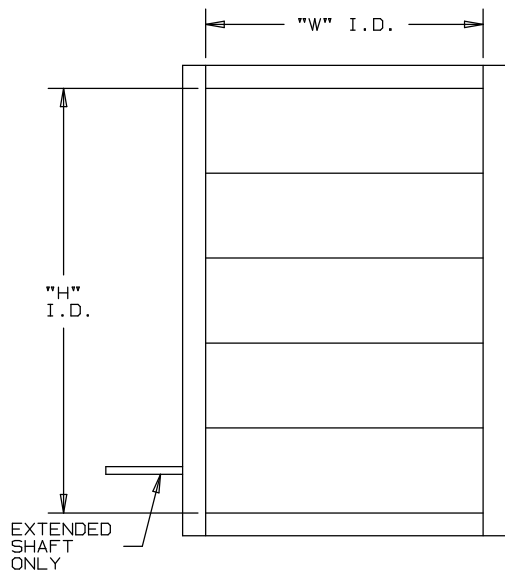
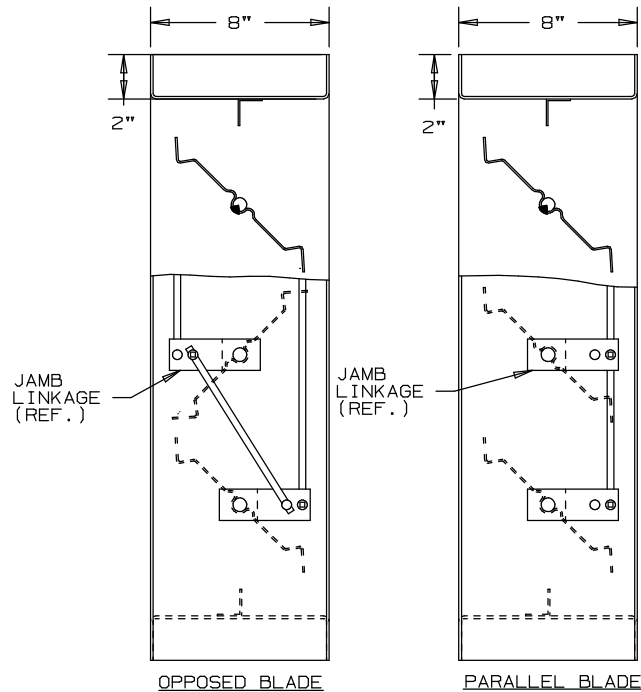


ARROW INDUSTRIAL DAMPER LIGHT DUTY

MODEL 303



FOR PERFORMANCE DATA
- SEE REVERSE SIDE

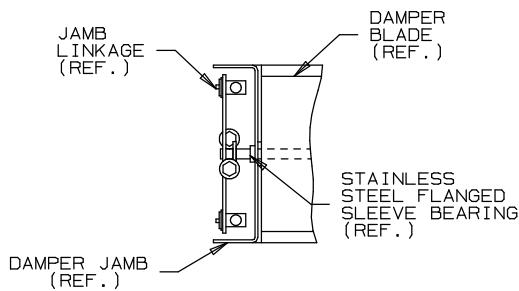


NOT TO SCALE

STANDARD SPECIFICATIONS

FRAME: 2"x8"x2"-14 GA. GALVANIZED STEEL FORMED CHANNEL.
 BLADE: 16 GA. FORMED GALVANIZED STEEL. ON 6" CENTERS.
 SHAFT: 1/2" DIA. PLATED COLD FINISHED STEEL STUB,
 PLUG WELDED TO BLADE. DRIVE SHAFT TO BE
 CONTINUOUS LENGTH.
 BEARINGS: STAINLESS STEEL FLANGED SLEEVE, PRESS
 FIT INTO FRAME.
 LINKAGE: PLATED STEEL ARM LOCATED IN JAMB. 5/16" DIA.
 INTER-CONNECTING ROD WITH STAINLESS STEEL
 TRUNNION PIVOT FASTENER.
 OPERATOR: 6" EXTENDED SHAFT.
 FINISH: FACTORY MILL.
 MAXIMUM TEMPERATURE: 250°F. FOR TEMPERATURES ABOVE 250°F,
 CONSULT FACTORY.
 MAXIMUM PANEL SIZE: 48"x96" I.D.
 MINIMUM PANEL SIZE: 6"x6 3/4" I.D. (SINGLE BLADE)
 6"x12" I.D. (OPPOSED BLADE)

- DAMPERS 36" WIDE AND ABOVE, FURNISHED WITH BLADE AND OR JAMB SEALS SHALL BE PROVIDED WITH DOUBLE JAMB LINKAGE.



JAMB LINKAGE DETAIL
OPPOSED LINKAGE
(SHOWN)

OPTIONAL

CONSTRUCTION MAY BE WITH OTHER THAN STANDARD MATERIALS WHEN REQUIRED TO MEET SPECIAL CONDITIONS AS TEMPERATURE, PRESSURE, VELOCITY, SYSTEM ENVIRONMENT OR OTHER SPECIFICATIONS.

LISTED BELOW ARE SOME OPTIONS USED FOR THE MORE COMMON TYPES OF APPLICATIONS.

1. STAINLESS STEEL BLADE EDGE SEALS.
2. STUFFING BOXES AND REPLACEABLE PACKING.
3. FLANGES OTHER THAN STANDARD 2" WIDE
4. PAINTED FINISHES.
5. PERIMETER HOLES-ONE FLANGE.
6. PERIMETER HOLES-TWO FLANGES.
7. OTHER MATERIAL.



ARROW UNITED INDUSTRIES
A DIVISION OF MESTEK, INC.

314 RIVERSIDE DRIVE
WYALUSING, PA 18853
TEL: (570) 746-1888 FAX: (570) 746-9286
WEB ADDRESS: WWW.ARROWUNITED.COM

AGENT: _____

ARCH. /ENG. :

CONTR. :

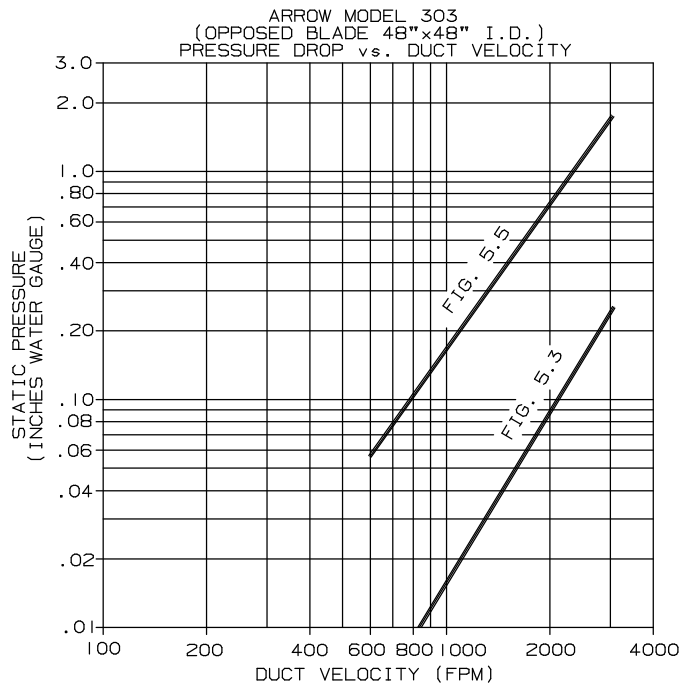
PROJECT :

EDR: ECN: JOB:

DATE: DWN. : DWG. :

INDUSTRIAL DAMPER LIGHT DUTY MODEL 303 PERFORMANCE DATA

PRESSURE DROP CURVES LISTED ARE BASED ON AMCA 500-D-98, USING TEST SET-UP 5.5. AND 5.3. STATIC PRESSURES ARE CORRECTED TO .075 LB./CU.FT.



LEAKAGE :

AIR LEAKAGE QUANTITIES IN THE CHART ARE RESULTS OF TESTS PER AMCA STANDARD 500-D-98 AND ARE SHOWN AT 1" W.G. DIFFERENTIAL PRESSURE AND CORRECTED TO .075 LB./CU.FT. AIR DENSITY.

AIR LEAKAGE (TOTAL C.F.M.)

DAMPER HEIGHT (INCHES)	DAMPER WIDTH (INCHES)						
	12"	18"	24"	30"	36"	42"	48"
12"	4	6	8	10	12	14	16
24"	8	12	16	20	24	28	32
36"	12	18	24	30	36	42	48
48"	16	24	32	40	48	56	64
60"	20	30	40	50	60	70	80
72"	24	36	48	60	72	84	96
84"	28	42	56	70	84	98	112
96"	32	48	64	80	96	112	128

FOR DETERMINING LEAKAGE VALUES GREATER THAN 1" W.G. TO A MAXIMUM OF 20" W.G. USE THE MULTIPLIER CORRECTION CHART BELOW.

STATIC PRESSURE (IN)	1	2	3	4	5	6	7	8	9	10	11	12	13	14	15	16	17	18	19	20	MAXIMUM DAMPER WIDTH
3.0	4.5	5.5	6.5	7.0	7.8	8.3	9.0	9.7	10.2	-	-	-	-	-	-	-	-	-	-	-	12"-17"
2.0	3.0	3.5	4.2	4.5	5.0	-	-	-	-	-	-	-	-	-	-	-	-	-	-	-	18"-24"
1.0	1.5	1.8	2.1	2.3	-	-	-	-	-	-	-	-	-	-	-	-	-	-	-	-	>24"-36"
1.0	1.5	1.8	2.1	-	-	-	-	-	-	-	-	-	-	-	-	-	-	-	-	-	>36"-48"

AIR LEAKAGE RATINGS ARE BASED ON AMCA STANDARD 500-D-98 USING TEST SET UP 5.4 WITH A DAMPER CLOSING TORQUE APPLIED TO THE DAMPER OF 10 IN.LBS./SQ.FT. OF DAMPER AREA FOR A SIZE 48" x 96", WITH A MINIMUM OF 40 IN.LBS/SQ.FT OF DAMPER AREA FOR A SIZE 48" x 6 3/4".

DAMPER AIR LEAKAGE SHOWN IS BASED UPON DAMPERS FURNISHED WITH BLADE AND JAMB SEALS. RESULTS PUBLISHED ARE FOR THE ARROW MODEL 303 INDUSTRIAL DAMPER FOR AN ENTIRE RANGE OF DAMPER SIZES.