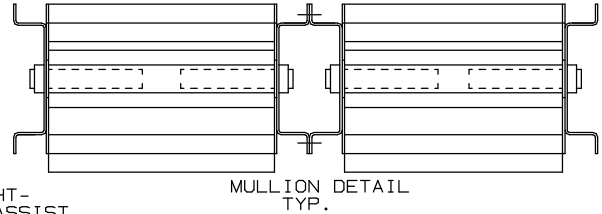
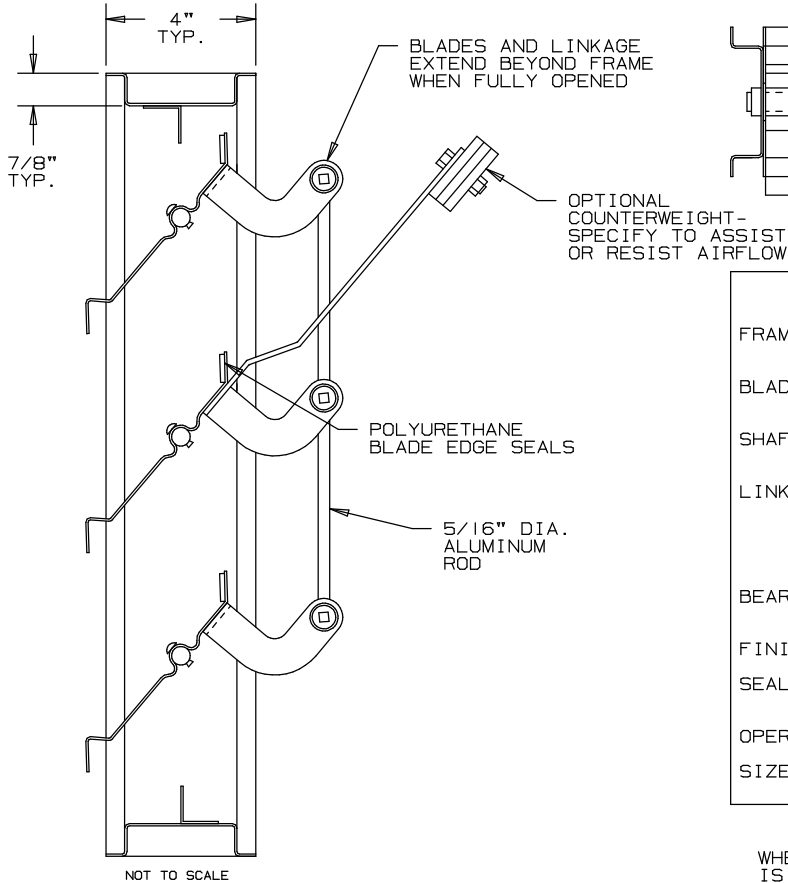


ARROW BACKDRAFT DAMPERS FORMED STEEL

TYPE 366

FOR INTAKE OR DISCHARGE APPLICATIONS



SPECIFICATIONS

- FRAMES: 16 GA. GALVANIZED STEEL, HAT-SHAPED CHANNEL FRAME.
- BLADES: 16 GA. GALVANIZED STEEL, ON 8" C-C SPACING (MAX).
- SHAFT: 1/2" DIA. PLATED STEEL STUB 6" LONG, MONO-BOLTED TO BLADE.
- LINKAGE: 1/8" THK. PLATED STEEL BRACKET WITH 1/2" DIA. STEEL PIVOT IN A CELCON SLEEVE BEARING. LINKAGE ROD IS 5/16" DIA. ALUMINUM, LOCKED TO PIVOT WITH 1/4-20 UNC PLATED STEEL SET SCREW.
- BEARINGS: OIL IMPREGNATED SINTERED BRONZE, FLANGED SLEEVE.
- FINISH: FACTORY MILL.
- SEALS: 3/16" THICK POLYURETHANE FOAM AT BLADE EDGES, NONE AT JAMBS.
- OPERATING TEMPERATURE LIMITS: -30°F TO 180°F
- SIZE LIMITS: MINIMUM: 8" WIDE x 11" HIGH
MAXIMUM: 48" WIDE x 72" HIGH

WHEN A NON-SYMETRICAL FRAME CROSS SECTION IS SPECIFIED (I.E.: FLANGED), SPECIFY THE FLANGE/AIRFLOW ORIENTATION.


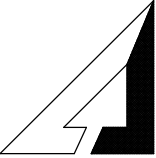
SPECIFY AIR FLOW-HORIZONTAL, VERTICAL-UP, OR VERTICAL-DOWN.

AVAILABLE OPTIONS OR VARIATIONS.

- HEAVIER FRAME AND BLADES TO 10 GA.
- HEAVIER SHAFTS TO 1" DIA.
- ALUMINUM BLADES AND SHAFTS.
- NEOPRENE BLADE EDGE SEALS.
- POLYURETHANE OR NEOPRENE JAMB SEALS.
- STAINLESS STEEL FRAME AND BLADES.
- STAINLESS STEEL SHAFTS.
- STAINLESS STEEL LINKAGE.
- ADJUSTABLE COUNTERWEIGHTS TO ASSIST OR RESIST OPENING.
- ADJUSTABLE COUNTERWEIGHTS FOR EXTERNAL APPLICATIONS ON EXTENDED SHAFT.
- OTHER FRAME CONTOURS.
- OTHER BEARINGS: NYLON, BALL, SINTERED STAINLESS STEEL.

FOR PERFORMANCE DATA
SEE REVERSE SIDE

NOMINAL DEDUCTIONS WILL BE MADE TO THE OPENING SIZE GIVEN.

ITEM	QTY.	WIDTH	HEIGHT	WIDTH	HEIGHT	MULL	COUNTER BALANCE	AIR FLOW (DIRECTION)	
		OPENING SIZE		DAMPER SIZE					
 ARROW UNITED INDUSTRIES A DIVISION OF MESTEK, INC. 314 RIVERSIDE DRIVE WYALUSING, PA 18853 TEL: (570) 746-1888 FAX: (570) 746-9286						ARCH./ENG.: _____ CONTR.: _____ PROJECT: _____ EDR: _____ ECN: _____ JOB: _____ DATE: _____ DWN.: _____ DWG.: _____			

AGENT: _____

ARROW MODEL 366 BACKDRAFT DAMPER PERFORMANCE DATA

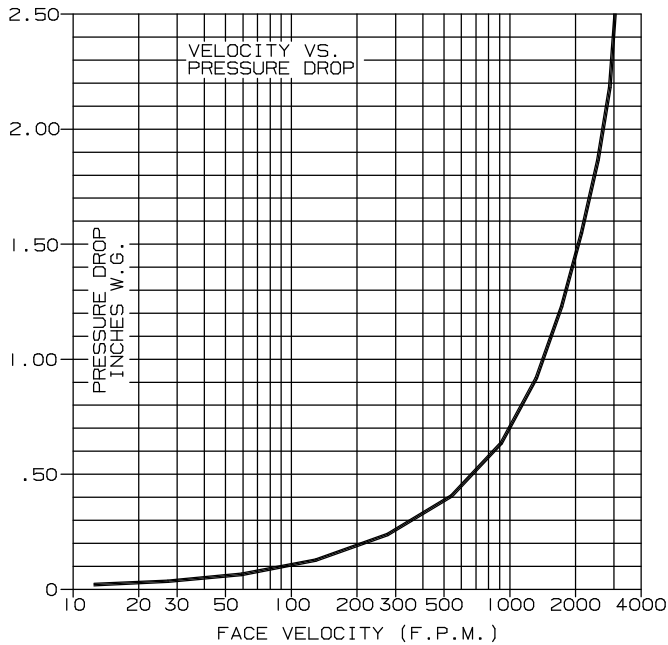
WITHOUT DUCTWORK

DAMPER INSTALLED PER AMCA 500 FIG. 5.4
(FACE MOUNTED TO A PLENUM).

PRESSURE IS CORRECTED TO .075 LB./CU.FT.
AIR DENSITY.

OPERATIONAL PRESSURES

START TO OPEN - .01 INCHES W.G.
FULLY OPEN - 2.5 INCHES W.G.



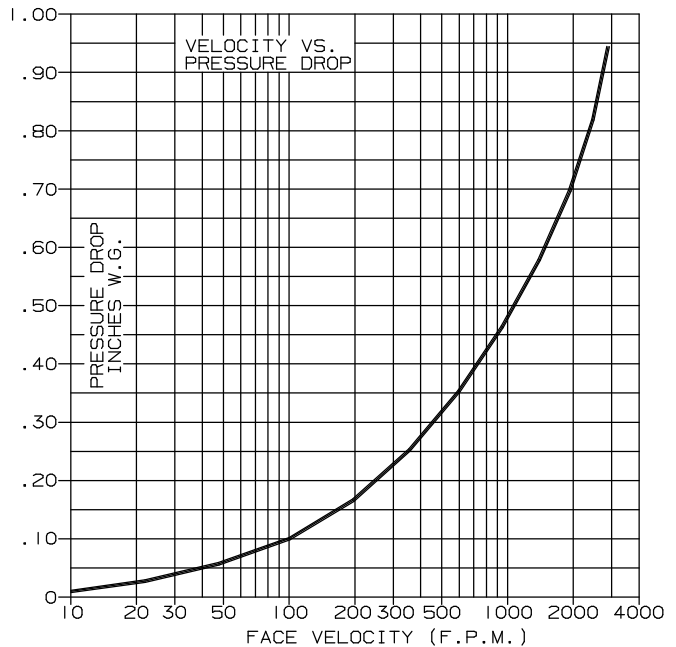
WITH DUCTWORK

DAMPER INSTALLED PER AMCA 500 FIG. 5.3
(DUCTWORK INSTALLED UPSTREAM AND DOWNSTREAM
OF DAMPER).

PRESSURE IS CORRECTED TO .075 LB./CU. FT.
AIR DENSITY.

OPERATIONAL PRESSURES

START TO OPEN - .01 INCHES W.G.
FULLY OPEN - .96 INCHES W.G.



TYPICAL PERFORMANCE FOR MODEL 366 BACKDRAFT DAMPER
SIZE TESTED 42" x 42", FURNISHED WITH COUNTERWEIGHT TO ASSIST OPENING.

AIR LEAKAGE

AIR LEAKAGE QUANTITIES SHOWN IN THE CHART ARE RESULTS OF TESTS PER AMCA
STANDARD 500 AND ARE SHOWN AT 1" W.G. DIFFERENTIAL PRESSURE AND CORRECTED
TO .075 LB./CU.FT. AIR DENSITY.

TOTAL CFM AIR LEAKAGE AT ONE INCH STATIC PRESSURE
DIFFERENTIAL THROUGH CLOSED DAMPER.

		DAMPER WIDTH (INCHES)						
		12"	18"	24"	30"	36"	42"	48"
DAMPER HEIGHT (INCHES)	12"	8.3	12.5	16.6	20.8	24.9	29.0	33.2
	24"	16.6	24.9	33.2	41.5	49.8	58.1	66.4
	36"	24.9	37.4	49.8	62.3	74.7	87.2	99.6
	48"	33.2	49.8	66.4	83.0	99.6	116.2	132.8
	60"	41.5	62.3	83.0	103.8	124.5	145.3	166.0
	72"	49.8	74.7	99.6	124.5	149.4	174.3	199.2

FOR DETERMINING LEAKAGE VALUES GREATER THAN 1" W.G. TO A
MAXIMUM 4" W.G. USE THE MULTIPLIER CORRECTION CHART BELOW.

STATIC PRESSURE (IN)	2	3	4
MULTIPLIER CORRECTION FACTOR	1.22	1.63	1.99

*MAXIMUM PANEL SIZE LIMIT 48" x 72"

AIR LEAKAGE RATINGS ARE BASED ON AMCA STANDARD 500 USING TEST SET UP FIG. 5.4
WITH DAMPER IN THE CLOSED POSITION WITHOUT THE AID OF A COUNTERWEIGHT OR OTHER
MECHANICAL MEANS TO PROVIDE CLOSING TORQUE, FOR A SIZE 42" x 42" DAMPER
WITH BLADE & JAMB SEALS.