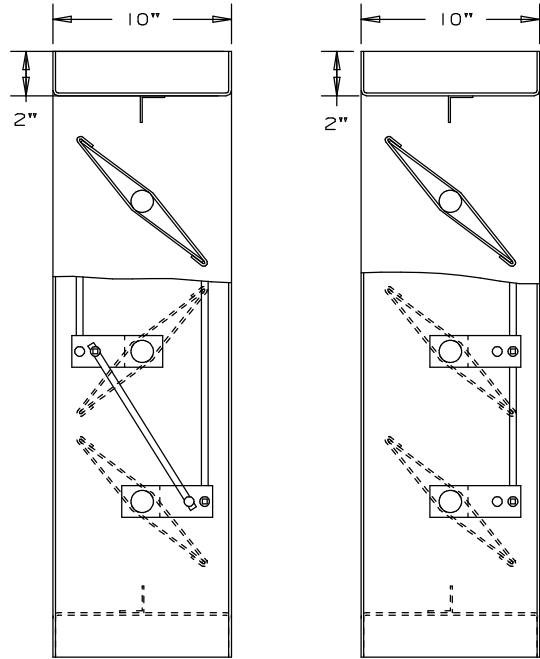
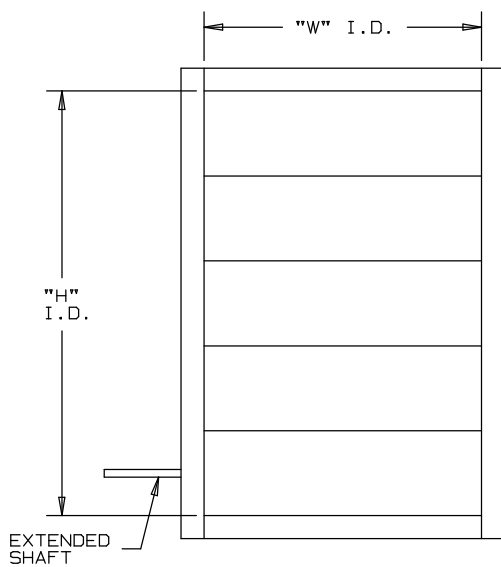


ARROW PROCESS-CONTROL HI-TEMPERATURE DAMPER

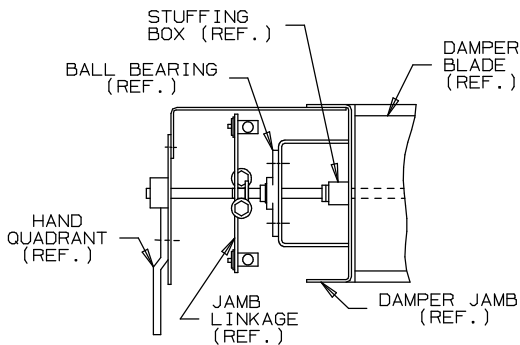
MODEL 540

15" STATIC PRESSURE-MAXIMUM, 800°F TEMPERATURE-
MAXIMUM FOR STANDARD CONSTRUCTION



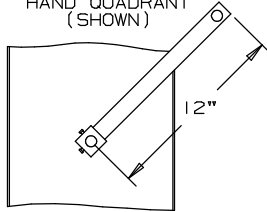
OPPOSED BLADE NOT TO SCALE PARALLEL BLADE

SEE OTHER SIDE FOR SUBMITTAL SHEET AND DAMPERS ORDER FORM



JAMB LINKAGE DETAIL

OPPOSED LINKAGE W/
HAND QUADRANT
(SHOWN)



LEVER FOR
MOTOR OPERATION

PLEASE SPECIFY OPERATOR TYPE

STANDARD SPECIFICATIONS

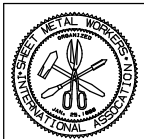
- FRAME: 2"x10"x2"-10 GA. HOT ROLL FORMED CHANNEL FRAME
- BLADE: 10 GA. AIRFOIL TO MAX 60" LENGTH
BLADE WIDTH-MAX. 9 3/4", MIN. 6"
- SHAFT: COLD FINISHED STEEL-1" DIA. TO 60" LENGTH.
- BEARINGS: BALL BEARINGS, MOUNTED ON STAND-OFF BRACKET WITH STUFFING BOX AND REPLACEABLE PACKING.
- LINKAGE: LOCATED IN JAMB. 1/2" DIA. INTER-CONNECTING ROD WITH TRUNNION PIVOT FASTENER.
- OPERATOR: MANUAL HAND QUADRANT OR LEVER ARM FOR MOTOR ACTUATOR. SPECIFY TYPE WHEN ORDERING.
- FINISH: HI-TEMPERATURE ALUMINUM PAINT.
- MAXIMUM TEMPERATURE: 800°F. FOR TEMPERATURES ABOVE 800°F, CONSULT FACTORY.
- MAXIMUM PANEL SIZE: 60"x96" I.D.
- MINIMUM PANEL SIZE: 6"x6" I.D. (SINGLE BLADE)
6"x12" I.D. (OPPOSED BLADE)

OPTIONAL

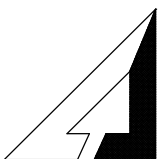
CONSTRUCTION MAY BE WITH OTHER THAN STANDARD MATERIALS WHEN REQUIRED TO MEET SPECIAL CONDITIONS AS TEMPERATURE, PRESSURE, VELOCITY, SYSTEM ENVIRONMENT OR OTHER SPECIFICATIONS.

LISTED BELOW ARE SOME OPTIONS USED FOR THE MORE COMMON TYPES OF APPLICATIONS.

1. STAINLESS STEEL BLADE EDGE SEALS.
 2. STAINLESS STEEL JAMB SEALS.
 3. FLANGES OTHER THAN STANDARD 2" WIDE.
 4. PAINTED FINISHES.
 5. PERIMETER HOLES-ONE FLANGE.
 6. PERIMETER HOLES-TWO FLANGES.
 7. CORTEN MATERIAL AVAILABLE
- THIS DAMPER NOT AVAILABLE IN STAINLESS STEEL.



UNION MADE



ARROW UNITED INDUSTRIES
A DIVISION OF MESTEK, INC.

314 RIVERSIDE DRIVE
WYALUSING, PA 18853

TEL: (570) 746-1888 FAX: (570) 746-9286

AGENT: _____

ARCH./ENG. :

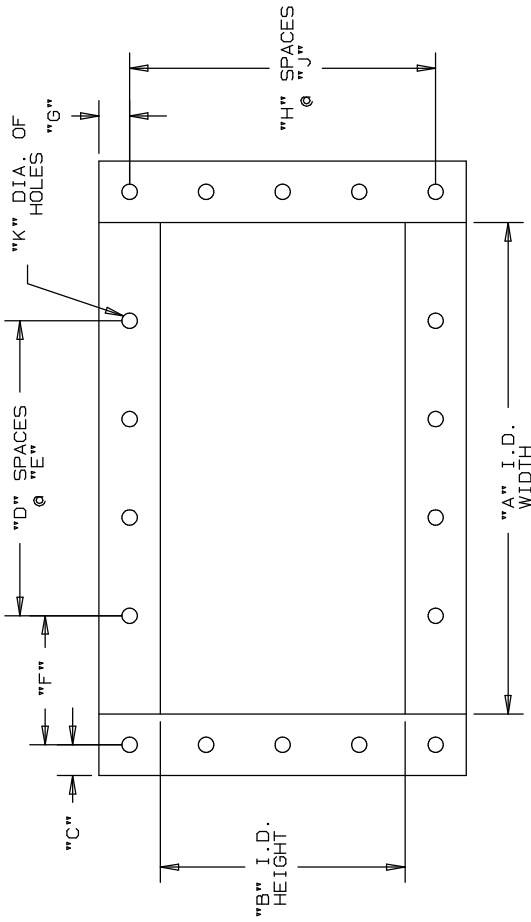
CONTR. :

PROJECT :

EDR: ECN: JOB:

DATE: DWN.: DWG. :

NOTES:



ITEM	QUANTITY	PARALLEL	OPPOSED	"A" I.D. (WIDTH)	"B" I.D. (HEIGHT)	"C"	"D"	"E"	"F"	"G"	"H"	"J"	"K"	"L"	"M"	HAND QUADRANT	MOTOR LEVER ARM	VARIATIONS

SHIP TO: _____ INVOICE TO: _____ PURCHASE ORDER: _____

MARK SHIPMENT: _____

SEND ORDER TO: _____



ARROW UNITED INDUSTRIES
A DIVISION OF MESTEK, INC.

314 RIVERSIDE DRIVE
WYALUSING, PA 18853

TEL: (570) 746-1888 FAX: (570) 746-9286