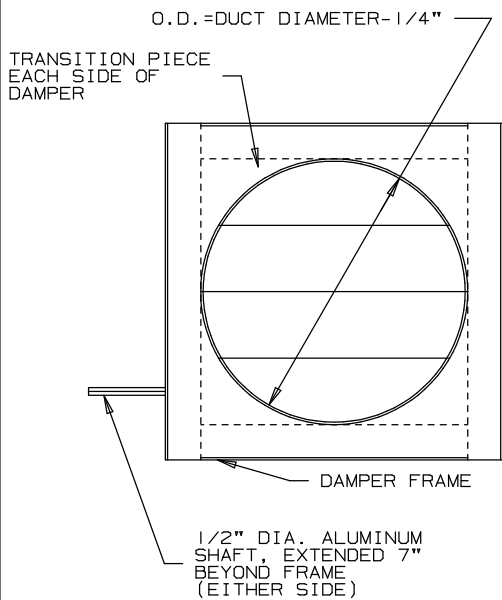


# ARROW TRANSITION DAMPERS FOR ROUND AND OVAL DUCTS

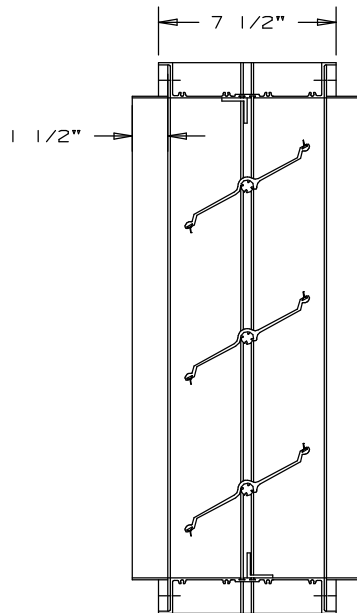
TYPE 56  
TYPE 85

ARROW-FOIL  
PIN-LOCK

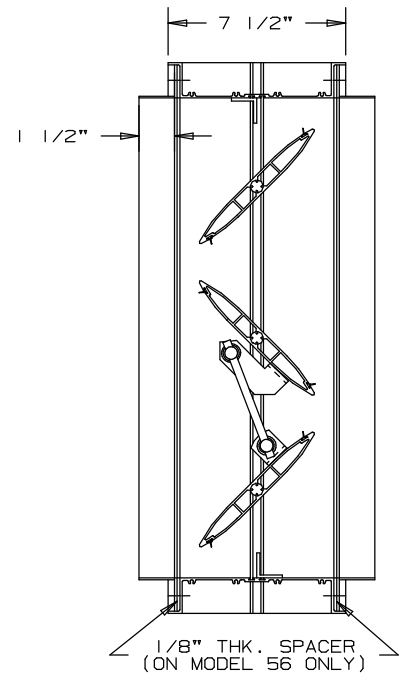
## TIGHT CLOSING-MINIMUM LEAKAGE MULTI-BLADE-ALUMINUM-WITH ARROW-FOIL OR PIN-LOCK BLADES



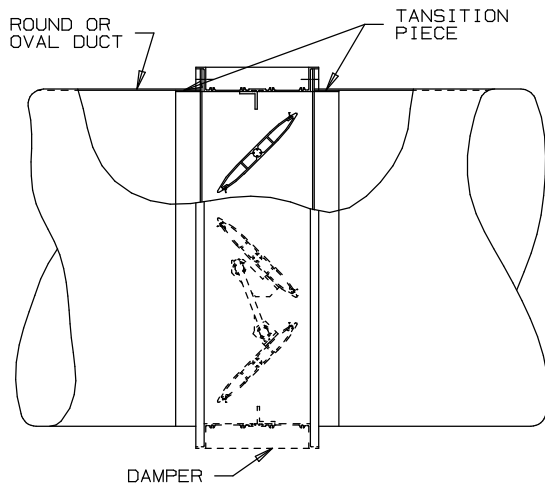
PIN-LOCK MODEL 85



PIN-LOCK  
MODEL 85  
(SHOWN PARALLEL)



ARROW-FOIL  
MODEL 56  
(SHOWN OPPOSED)



SECTION SHOWING TYPICAL APPLICATION

### SPECIFICATIONS

1. DAMPER IS A STANDARD "ARROW-FOIL" OR "PIN-LOCK" CONSTRUCTION IN A 1 5/8"x7 1/2"x1 5/8" EXTRUDED "HAT-SHAPED" CHANNEL FRAME.
2. TRANSITION PIECE (.080" THK. ALUMINUM) ON EACH.
3. SIDE OF DAMPER, CONNECTS TO ROUND OR OVAL DUCT. SEE ARROW-FOIL OR PIN-LOCK CATALOG SHEET FOR DAMPER SPECIFICATIONS.
4. DAMPER BEARINGS ARE DOUBLE-SEALED.
5. LINKAGE IN JAMB, OUT OF AIRSTREAM.

MODEL NO.

PIN-LOCK ROUND TRANSITION (PAR. OR OPP.)..... 85  
ARROW-FOIL ROUND TRANSITION (PAR. OR OPP.)..... 56  
FOR OVAL ADD "OV" TO MODEL NUMBER, EX. .... 85-OV

UP TO 4" S.P.-USE MODEL 85(PIN-LOCK)  
MAXIMUM WIDTH-MODEL 85-48"

UP TO 6" S.P.-USE MODEL 56(ARROW-FOIL)  
MAXIMUM WIDTH-MODEL 56-60"

SHIPPING WEIGHT-7 LBS./SQ.FT.



**ARROW UNITED INDUSTRIES**  
A DIVISION OF MESTEK, INC.  
314 RIVERSIDE DRIVE  
WYALUSING, PA 18853  
TEL: (570) 746-1888 FAX: (570) 746-9286

AGENT: \_\_\_\_\_

ARCH./ENG.:

CONTR.:

PROJECT:

EDR:

ECN:

JOB:

DATE:

DWN.:

DWG.: