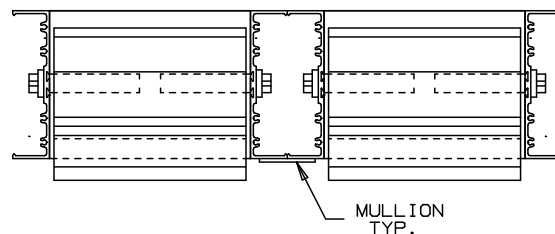
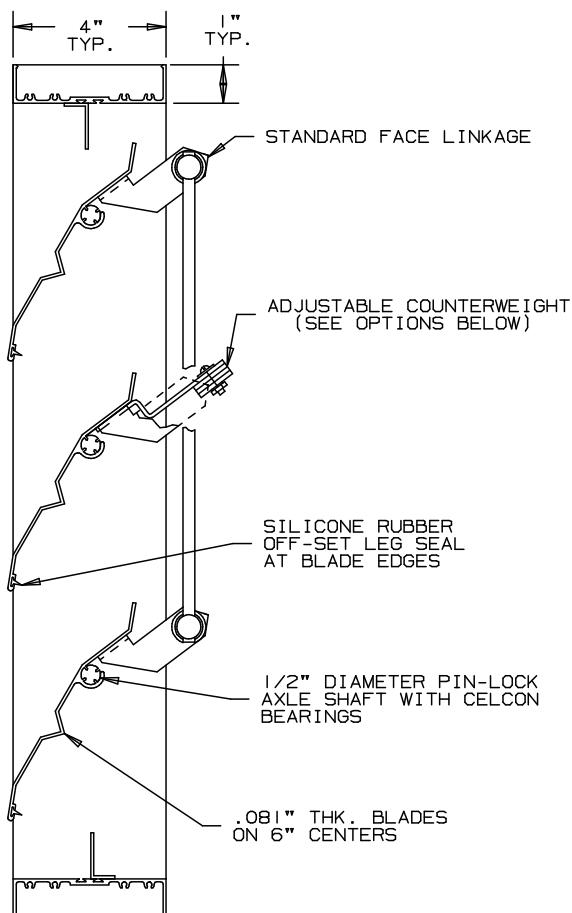


ARROW BACKDRAFT DAMPERS ALUMINUM

TYPE 655



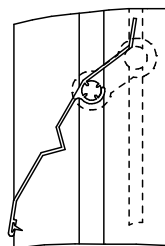
SPECIFICATIONS

- FRAME : EXTRUDED ALUMINUM, 6063-T6/T52 ALLOY, AVAILABLE IN .081" AND .125 NOMINAL THICKNESS 1"x4"x1" CHANNEL FRAME ON ALL SIDES.
- BLADES: EXTRUDED ALUMINUM, 6063-T6/T52 ALLOY, .081" THICK. DESIGNED FOR STRENGTH AND LOW LEAKAGE WITH OVERLAPPING EDGES.
- AXLES: 1/2" DIAMETER EXTRUDED ALUMINUM, PIN-LOCK DESIGN.
- SEALS: SILICONE RUBBER OFF-SET LEG AT BLADE EDGES. NONE AT JAMBS.
- BEARING: CELCON BEARING MATERIAL SO THAT THERE WILL BE NO METAL TO METAL FRICTION.
- LINKAGE: FACE MOUNTED IN THE AIRSTREAM.
- FACE OF DAMPER: FULL JAMB SECTION WITH BLADES, HEAD AND SILL CONTAINED IN JAMBS.
- MAXIMUM PANEL SIZE: 48" x 72"
- MINIMUM PANEL SIZE: 8" x 8"
- TEMPERATURE LIMITS: -40°F TO 190°F
- FINISH: MILL IS STANDARD, OPTIONAL FINISHES AVAILABLE.

NOT TO SCALE

OPTIONAL

- FRAMES: ALUMINUM - 1 5/8"x6 1/2"x1 5/8" FLANGED - (ALUMINUM) 2"x4"x5/8" STEEL - CHANNEL OR FLANGED
- SCREENS: BIRD OR INSECT
- LINKAGE: IN-JAMB OUT OF AIRSTREAM
- SEALS: POLYURETHANE OR NEOPRENE AT JAMBS
- BEARINGS: OILITE BRONZE OR BALL BEARING
- COUNTERWEIGHTS: ADJUSTABLE FOR INFINITE OPENING PRESSURES. OPTIONAL LOCATIONS. SPECIFY IF AIRFLOW IS HORIZONTAL, VERTICAL UP OR DOWN. SPECIFY TO ASSIST OR RESIST OPENING. SPECIFY LOCATIONS, INTERNALLY (ON BLADES) OR EXTERNALLY (ON EXTENDED SHAFT).



OPTIONAL
JAMB LINKAGE AND
JAMB SEALS

NOTE:
WHEN A NON-SYMETRICAL FRAME CROSS SECTION IS SPECIFIED (I.E. FLANGED), SPECIFY THE FLANGE/AIRFLOW ORIENTATION.

FOR PERFORMANCE DATA
SEE REVERSE SIDE

NOMINAL DEDUCTIONS WILL BE MADE TO OPENING SIZES GIVEN.

ITEM	QTY.	WIDTH	HEIGHT	WIDTH	HEIGHT	MULL				
		OPENING SIZE		DAMPER SIZE						

ARROW UNITED INDUSTRIES
A DIVISION OF MESTEK, INC.
314 RIVERSIDE DRIVE
WYALUSING, PA 18853
TEL: (570) 746-1888 FAX: (570) 746-9286

AGENT: _____

ARCH./ENG. : _____

CONTR. : _____

PROJECT : _____

EDR : _____ ECN : _____ JOB : _____

DATE : _____ DWN. : _____ DWG. : _____