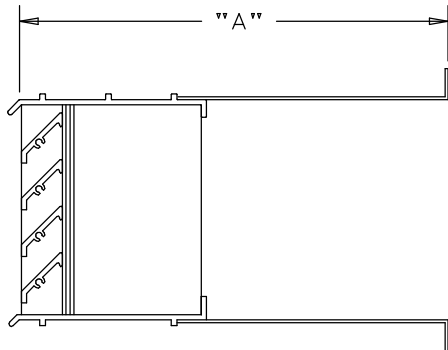


ARROW EXTRUDED ALUMINUM BRICK VENTS

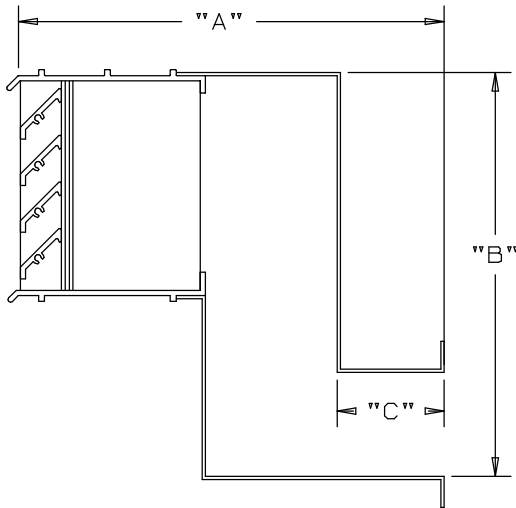
ARROW EXTRUDED ALUMINUM BRICK VENTS

- USE IN PLACE OF LOW LOUVERS FOR EXTRA FREE AREA VENTILATION.
- 4" DEEP FRAME, 45° BLADES. FRAME AND BLADES .125" THICK.
- DESIGNED FOR MAXIMUM PROTECTION AGAINST WATER ENTERING BUILDING.
- AVAILABLE IN PRACTICALLY ANY WIDTH OR HEIGHT. MANY STOCK SIZES FOR IMMEDIATE SHIPMENT.
- CLEAR ANODIZED FINISH IS STANDARD. DURONODIC, OTHER FINISHES AVAILABLE.



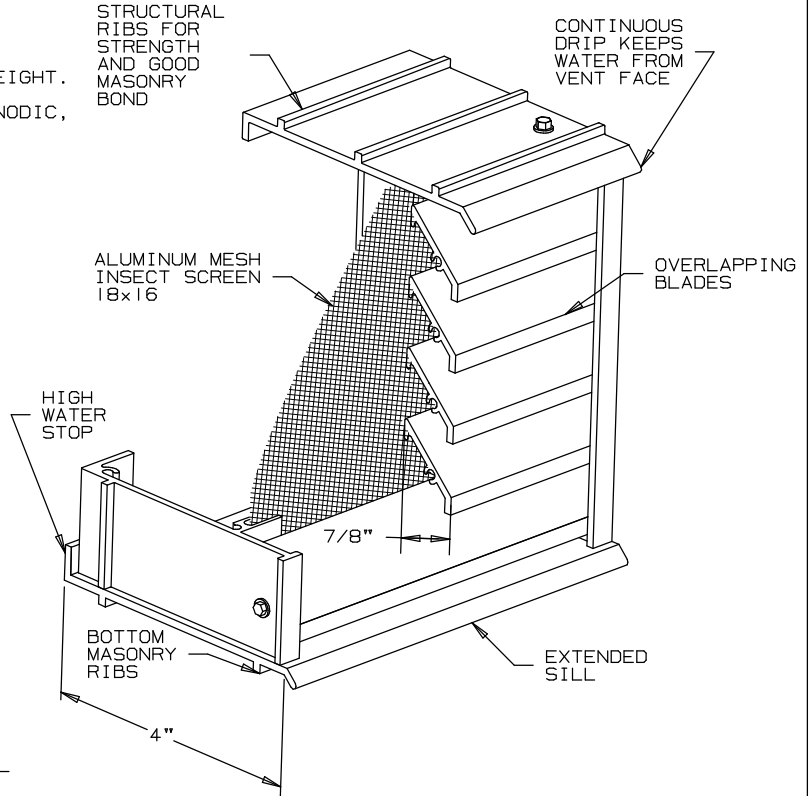
STRAIGHT DUCTS

FASTENED SECURELY TO VENT 24 GA. GALVANIZED STEEL STANDARD. SPECIFY WALL THICKNESS ("A" DIMENSION).



"Z" DUCTS

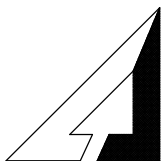
FASTENED SECURELY TO VENT 24 GA. GALVANIZED STEEL STANDARD. USE WHEN SPACE TO BE VENTED IS BELOW GRADE. PROVIDE DIMENSIONS "A", "B", & "C".



STOCK SIZES AVAILABLE			FREE AREA (SQ. IN.)
NO.	SIZE	METRIC	
133	8" x 2 1/2"	203mm x 64mm	5.47
135	8" x 4 3/4"	203mm x 121mm	9.93
140	8" x 7 3/4"	203mm x 197mm	20.89
170	16 1/2" x 2 1/2"	419mm x 64mm	13.10
172	16 1/2" x 4 3/4"	419mm x 121mm	24.04
174	16 1/2" x 7 3/4"	419mm x 197mm	45.79
127	12" x 2 1/2"	305mm x 64mm	9.07
125	12" x 4 3/4"	305mm x 121mm	16.56
245	24" x 4 3/4"	610mm x 121mm	36.43
247	24" x 7 3/4"	610mm x 197mm	69.55



UNION MADE



ARROW UNITED INDUSTRIES
A DIVISION OF MESTEK, INC.

314 RIVERSIDE DRIVE
WYALUSING, PA 18853

TEL: (570) 746-1888 FAX: (570) 746-9286

AGENT: _____

ARCH./ENG.:

CONTR.:

PROJECT:

EDR: ECN: JOB:

DATE: DWN.: DWG.:

