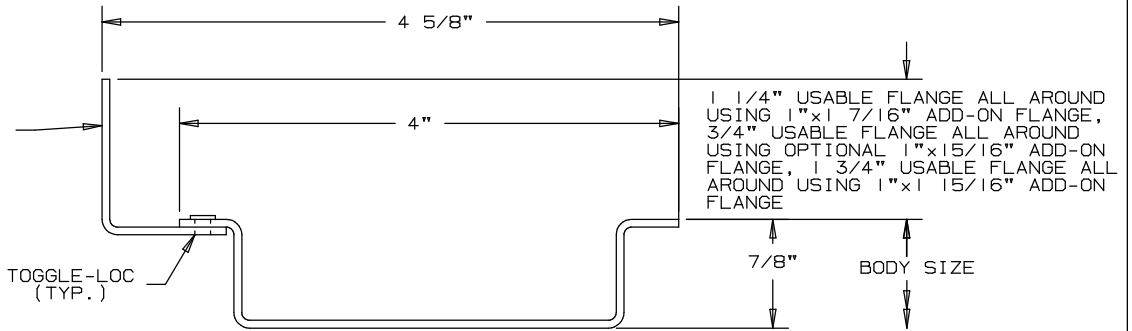


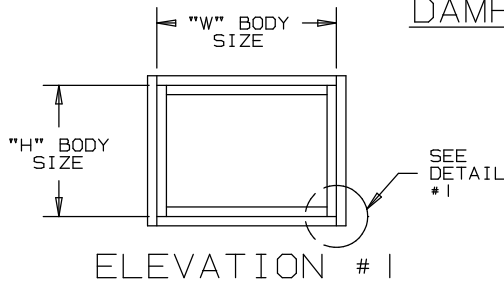
ARROW DAMPER ACCESSORIES

OPTIONAL STEEL DAMPER ADD-ON FLANGE MODELS 395/1770

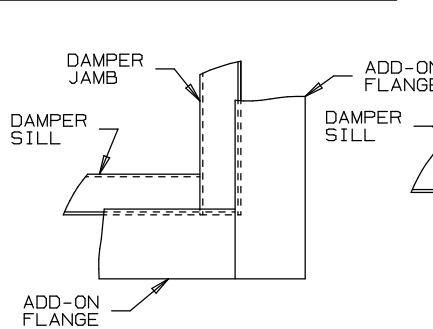
1" x 1 7/16", 16 GA.
GALVANIZED STL.
ANGLE ADD-ON FLANGE
- STANDARD LOCATION
ON SIDE OPPOSITE
FACE LINKAGE.
TYPICAL AROUND
PERIMETER OF FRAME.
OPTIONAL:
1" x 15/16", AND
1" x 1 15/16"
16 GA. GALVANIZED
STEEL ADD-ON FLANGE



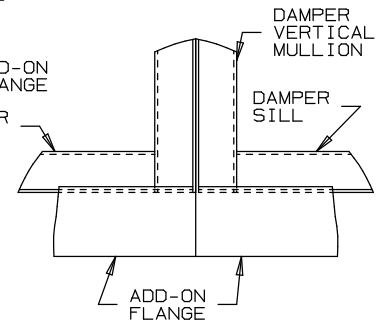
DAMPER FRAME DETAIL



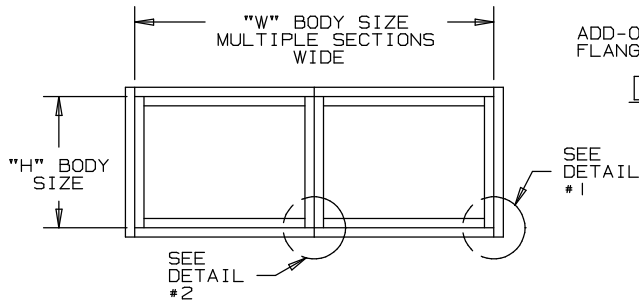
ELEVATION # 1



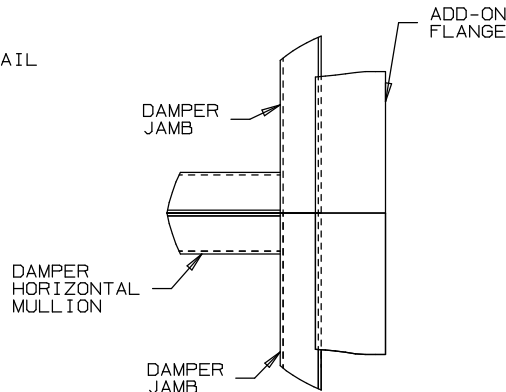
DETAIL # 1



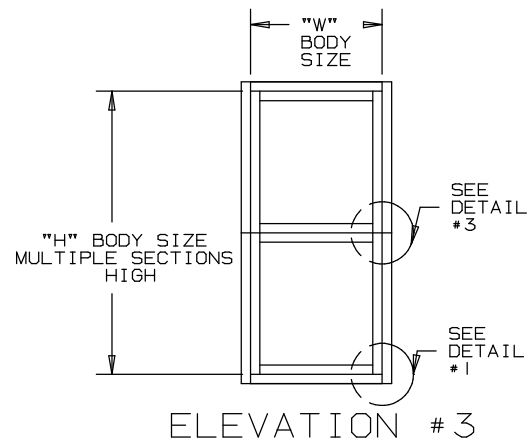
DETAIL # 2



ELEVATION # 2



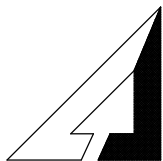
DETAIL # 3



ELEVATION # 3

NOTES:

1. WHEN FRAMES OF ADJACENT PANELS ARE JOINED AT THE MULLION (EITHER VERTICALLY OR HORIZONTALLY), THE FLANGE WILL BE OMITTED. THE MULLION WILL BE AS IT WOULD BE FOR A STANDARD CHANNEL FRAME. ADD-ON FLANGE IS ONLY AROUND OUTSIDE PERIMETER OF FRAME.
2. STANDARD MOUNTING LOCATION FOR ADD-ON FLANGE IS ON SIDE OPPOSITE FACE LINKAGE. OPTIONAL MOUNTING LOCATION IS ON SAME SIDE AS FACE LINKAGE.
3. REFER TO CATALOG SHEET #737 FOR REMAINING STANDARD MODEL 395 DAMPER CONSTRUCTION AND CATALOG SHEET #463 FOR STANDARD MODEL 1770 DAMPER CONSTRUCTION.



ARROW UNITED INDUSTRIES
A DIVISION OF MESTEK, INC.

314 RIVERSIDE DRIVE
WYALUSING, PA 18853

TEL: (717) 746-1888 FAX: (717) 746-9286

AGENT: _____

ARCH./ENG.:

CONTR.:

PROJECT:

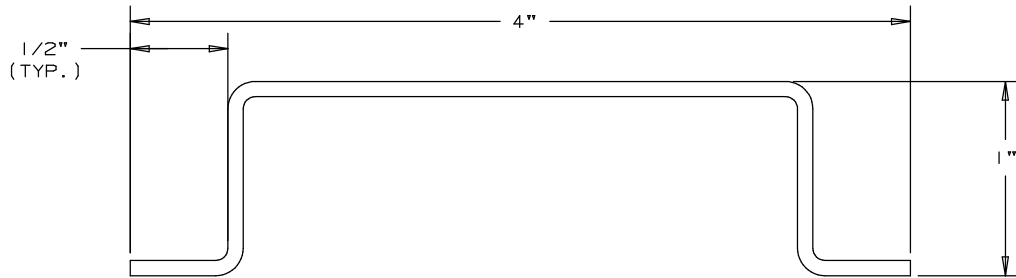
EDR: ECN: JOB:

DATE: DWN.: DWG.:

ARROW DAMPER ACCESSORIES

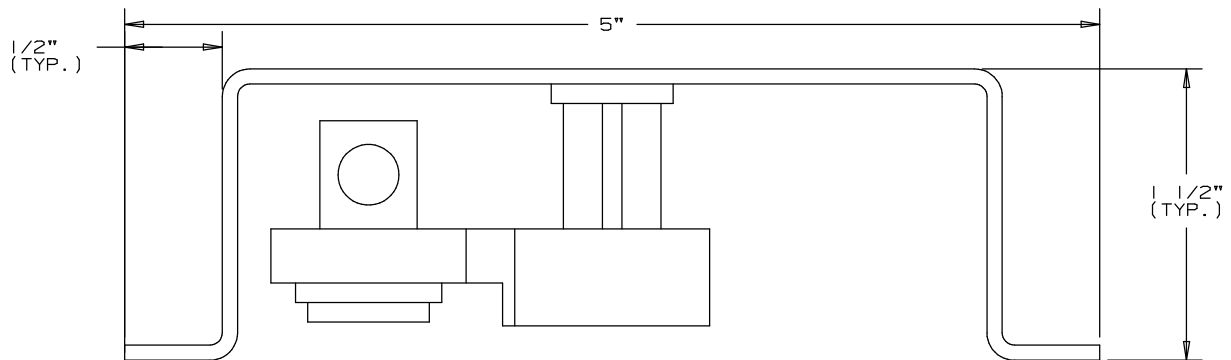
OPTIONAL STEEL DAMPER FRAME SUPPLEMENTAL

OPTIONAL DAMPER FRAMES FOR USE WITH
ARROW STEEL CONTROL DAMPERS

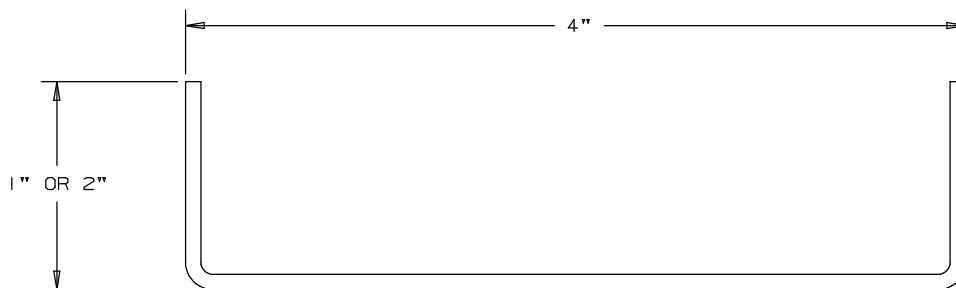


HAT-SHAPED FRAME

HAT-SHAPED FRAMES ARE FABRICATED TO 14 GA. STEEL WHEN A "DOUBLE-SEALED" PRESS FIT BEARING IS USED. WITH FLANGE SLEEVE OILITE BEARING, FRAME THICKNESS CAN INCREASE TO 12 GA. THICKNESS.



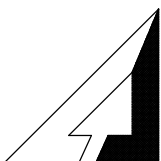
HAT-SHAPED FRAME
FOR USE WITH JAMB LINKAGE



CHANNEL FRAME

CHANNEL FRAMES ARE FABRICATED TO 14 GA. STEEL WHEN A "DOUBLE-SEALED" PRESS FIT BEARING IS USED. WITH FLANGE SLEEVE OILITE BEARING, FRAME THICKNESS CAN INCREASE TO 10 GA. THICKNESS.

*THIS SUPPLEMENTAL FRAME DATA IS TO BE USED IN CONJUNCTION WITH THE STANDARD CATALOG SHEETS FOR THE ARROW "EXTRUDED ALUMINUM ARROW-FOIL" AND THE "1770 & 395" STEEL CONTROL DAMPERS.



ARROW UNITED INDUSTRIES
A DIVISION OF MESTEK, INC.

314 RIVERSIDE DRIVE
WYALUSING, PA 18853

TEL: (717) 746-1888 FAX: (717) 746-9286

AGENT: _____

ARCH./ENG.:

CONTR.:

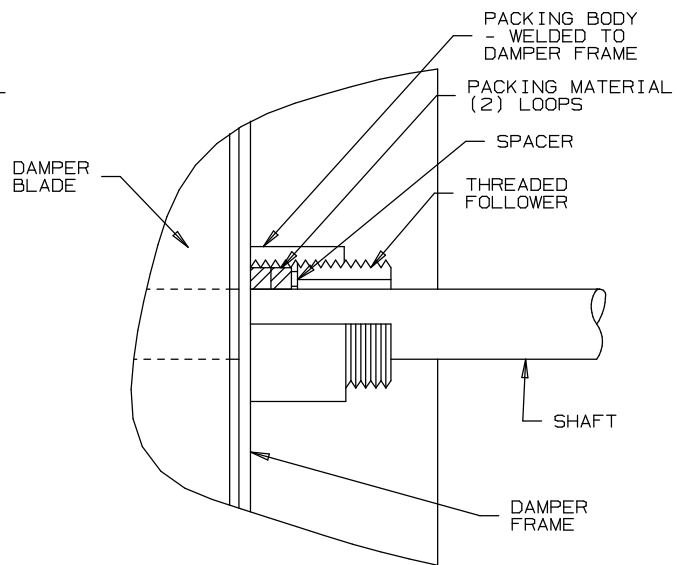
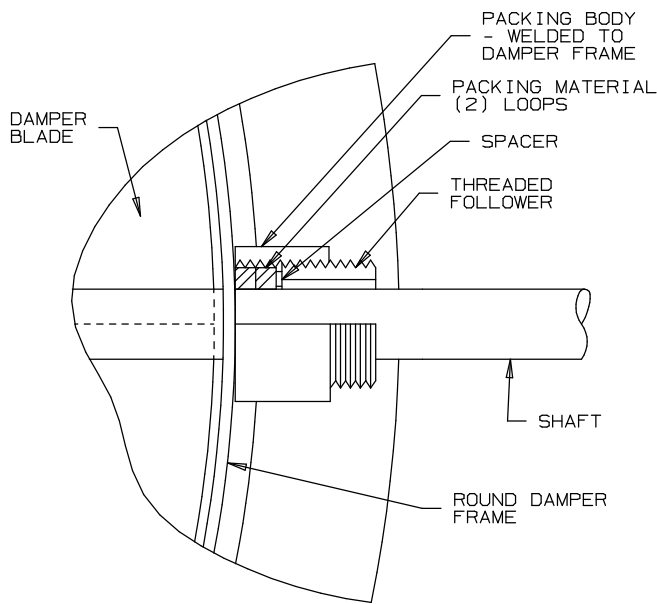
PROJECT:

EDR: ECN: JOB:

DATE: DWN.: DWG.:

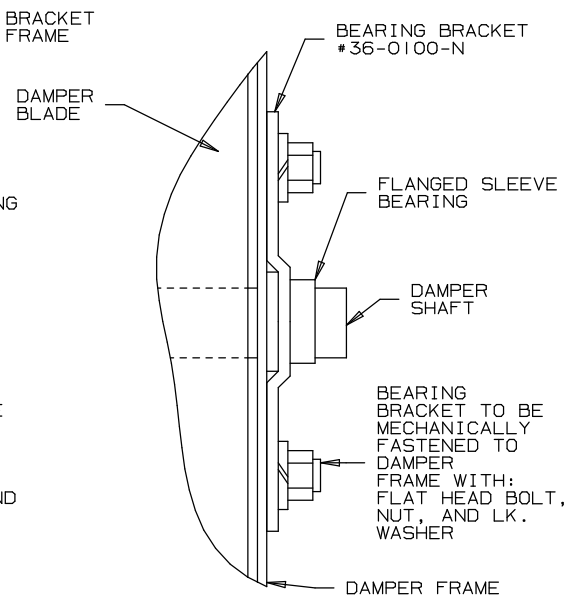
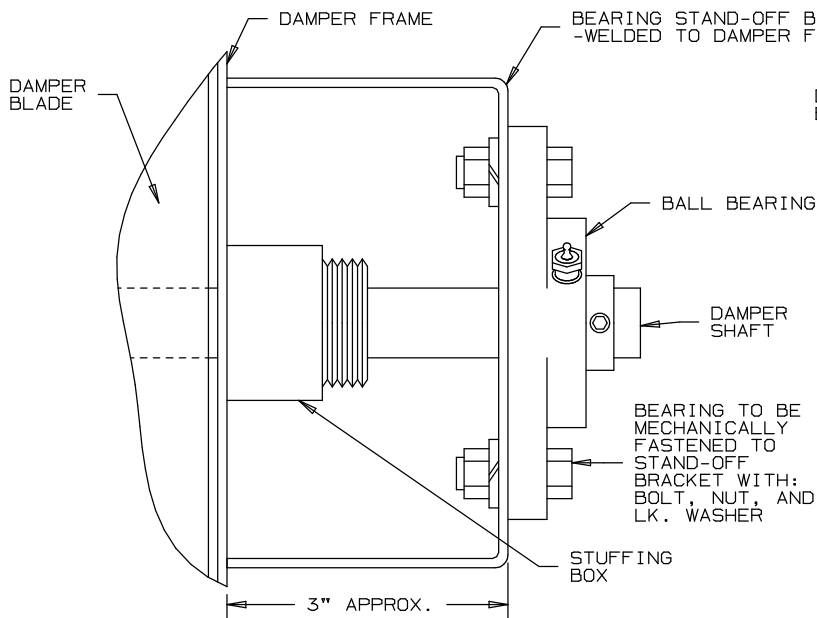
ARROW INDUSTRIAL DAMPER

STUFFING BOX & BEARING MOUNTING DETAILS



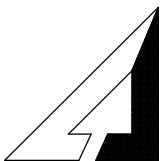
STUFFING BOX MOUNTING DETAILS

PACKING MATERIAL VARIES WITH APPLICATION.
CONSULT FACTORY WITH SPECIFIC APPLICATION REQUIREMENTS.



BEARING MOUNTING DETAILS

BEARING STAND-OFF BRACKET IS TYPICALLY USED WHEN FURNISHING A STUFFING BOX.



ARROW UNITED INDUSTRIES
A DIVISION OF MESTEK, INC.

314 RIVERSIDE DRIVE
WYALUSING, PA 18853

TEL: (717) 746-1888 FAX: (717) 746-9286

AGENT: _____

ARCH./ENG.:

CONTR.:

PROJECT:

EDR:

ECN:

JOB:

DATE:

DWN.:

DWG.: