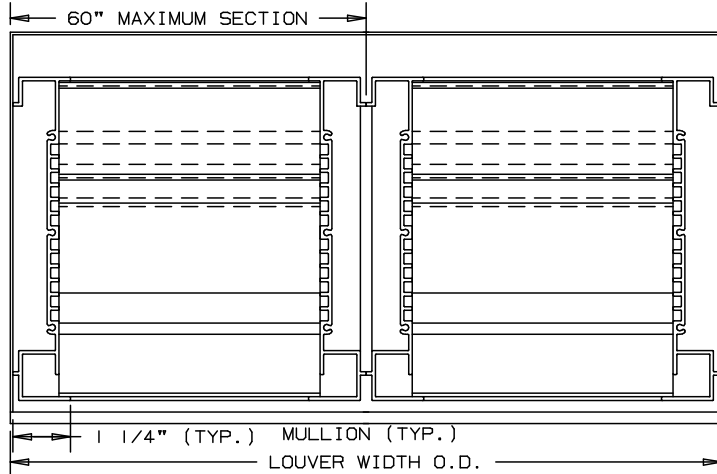
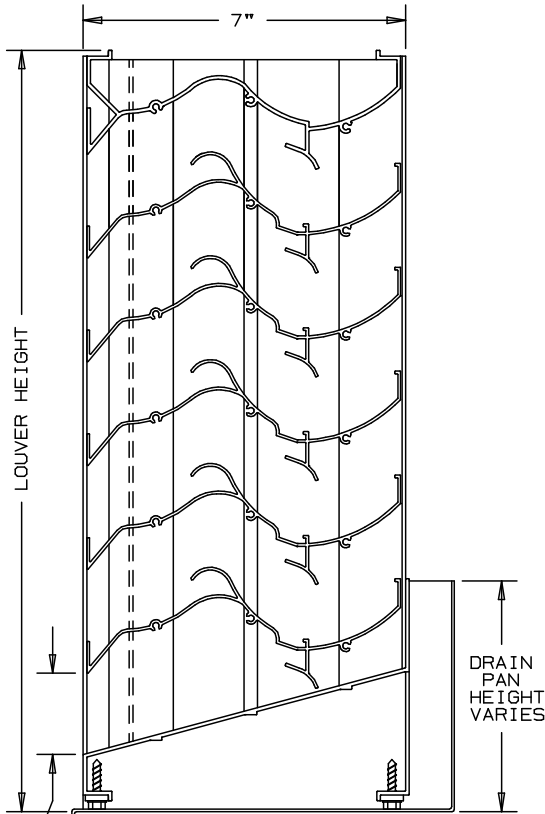


ARROW EXTRUDED ALUMINUM LOUVERS 7" DEEP

TYPE EA-725-D

CHEVRON DRAIN BLADE - STATIONARY - CHANNEL TYPE
SIGHTPROOF - WIND DRIVEN RAIN RESISTANT



SPECIFICATIONS

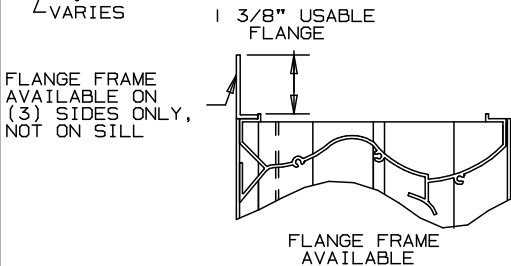
MATERIAL: EXTRUDED ALUMINUM 6063-T6/T52 ALLOY
 FRAMES: .080" THICK NOMINAL.
 BLADES: .080" THICK NOMINAL
 FACE OF LOUVER: HEAD AND BLADES CONTAINED WITHIN THE JAMBS.
 SILL CONTAINS JAMBS.
 APPROXIMATE BLADE CENTERS 2 1/4".
 SCREENS: WHEN INDICATED, IN A REMOVABLE FRAME.
 BIRD SCREEN - 1/2" FLATTENED EXPANDED ALUMINUM, .051" THK.
 OR - 1/2" SQ. MESH, INTERMEDIATE DOUBLE-CRIMPED
 ALUMINUM WIRE, .063 DIA.
 OR - 18/16 MESH, .011" DIA. ALUMINUM WIRE,
 INSECT SCREEN.

FINISH: _____
 LOUVER SIZES: 12" x 12" MINIMUM PANEL SIZE.
 30 SQUARE FEET IS THE MAXIMUM SECTION SIZE.
 LOUVERS LARGER THAN THE MAXIMUM FACTORY
 ASSEMBLED SIZE WILL REQUIRE FIELD ASSEMBLY
 OF SMALLER LOUVER SECTIONS

LOUVER PERFORMANCE STATEMENT

LOUVER MODEL EA-725-D SHALL BE FABRICATED TO PROVIDE A MINIMUM OF (45.1%) 7.22 SQUARE FEET OF FREE AREA FOR A SIZE 48"x48" LOUVER AND BEAR THE AMCA CERTIFIED RATINGS SEAL FOR AIR PERFORMANCE, WATER PENETRATION AND WIND DRIVEN RAIN. THE RATINGS SHALL SHOW A BEGINNING POINT OF WATER PENETRATION AT .01 OUNCES PER SQUARE FOOT OF FREE AREA AT 1187 FPM (8,570 CFM) WITH .33 INCHES WATER GAGE PRESSURE DROP AT 1000 FPM AIR INTAKE.
 IN ADDITION, THIS LOUVER IS TESTED TO WIND DRIVEN RAIN TEST STANDARD, AMCA 500-L-99, WHERE THE LOUVER IS SUBJECTED TO SIMULATED WIND DRIVEN RAIN. THE RESULT OF THIS TEST FOR A SIZE 48"x48" LOUVER, SHALL SHOW A CLASS "A" RATING AT 3 INCHES OF RAINFALL AT AN INTAKE VELOCITY OF 1,338 FPM (7,076 CFM) AT A WIND SPEED OF 29 MPH, AND A CLASS "A" RATING AT 8 INCHES OF RAINFALL AT AN INTAKE VELOCITY OF 1,177 FPM (6,227 CFM) AT A WIND SPEED OF 50 MPH.

FOR CERTIFIED RATINGS AUTHORIZED
BY AMCA - SEE REVERSE SIDE



NOMINAL DEDUCTIONS WILL BE MADE TO THE OPENING SIZE GIVEN.

ITEM	QTY.	WIDTH	HEIGHT	WIDTH	HEIGHT	MULL	TYPE	LOC			
		OPENING SIZE		LOUVER SIZE					SCREENS		

ARROW UNITED INDUSTRIES
 A DIVISION OF MESTEK, INC.
 314 RIVERSIDE DRIVE
 WYALUSING, PA 18853
 TEL: (570) 746-1888 FAX: (570) 746-9286
 AGENT: _____

ARCH./ENG. :
 CONTR. :
 PROJECT :
 EDR: ECN: JOB:
 DATE: DWN. : DWG. :

LOUVER MODEL EA-725-D

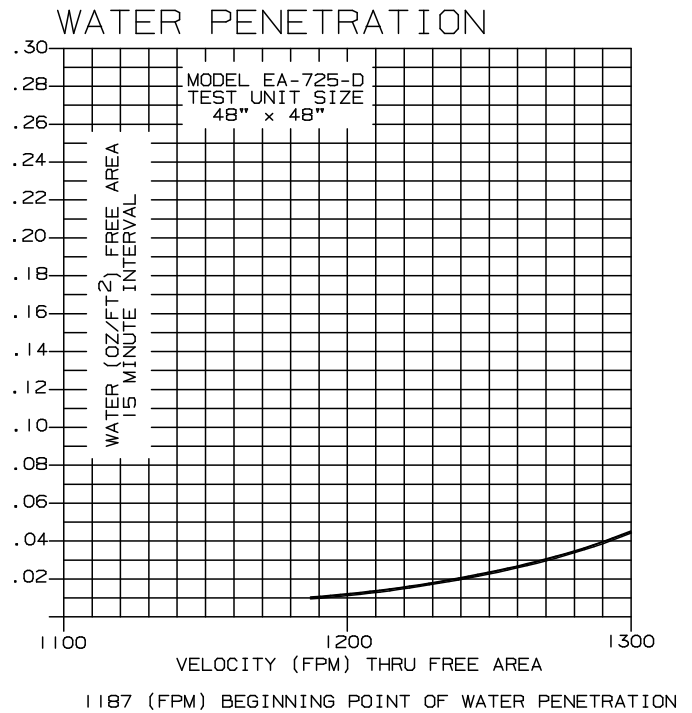
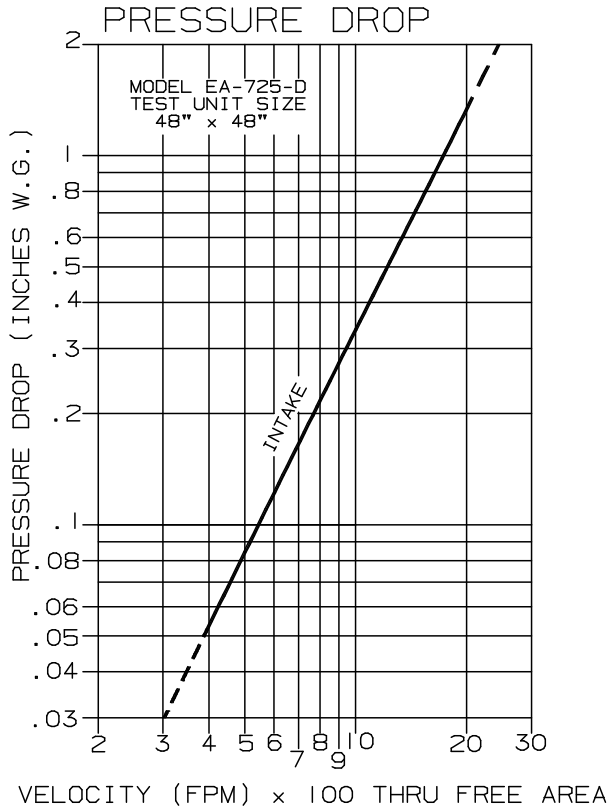
WIND DRIVEN RAIN RESISTANT LOUVER

EXTRUDED ALUMINUM - STATIONARY

PERFORMANCE DATA

TESTS OF A 48" x 48" ACCORDING TO AMCA STANDARD 500-L SHOWS
 THE BEGINNING POINT OF WATER PENETRATION IS AT 1187 FPM
 THROUGH THE FREE AREA OF THE LOUVER, WITH LESS THAN .34 INCHES
 WATER GAUGE PRESSURE DROP AT 1000 FPM (INTAKE).

RATINGS DO NOT INCLUDE EFFECTS OF BIRD SCREEN.



FREE AREA

		FREE AREA (SQ. FT.)									
		WIDTH									
		12"	24"	36"	48"	60"	72"	84"	96"	108"	120"
HEIGHT	12"	.24	.55	.86	1.17	1.48	1.79	2.10	2.41	2.72	3.03
	24"	.63	1.44	2.25	3.06	3.87	4.68	5.49	6.30	7.11	7.92
	36"	1.02	2.33	3.65	4.96	6.27	7.58	8.89	10.20	11.51	12.82
	48"	1.49	3.40	5.32	7.22	9.14	11.05	12.96	14.87	16.78	18.69
	60"	1.89	4.30	6.71	9.12	11.53	13.94	16.35	18.77	21.18	23.59
	72"	2.28	5.19	8.10	11.01	13.92	16.84	19.75	22.66	25.57	28.49
	84"	2.75	6.26	9.77	13.28	16.80	20.31	23.82	27.33	30.85	34.36
	96"	3.14	7.15	11.16	15.18	19.19	23.20	27.22	31.23	35.24	39.26
	108"	3.53	8.04	12.56	17.07	21.58	26.10	30.61	35.12	39.64	44.15
	120"	4.00	9.11	14.23	19.34	24.46	29.57	34.68	39.80	44.91	50.03

LOUVER MODEL EA-725-D

PERFORMANCE DATA

WIND DRIVEN RAINWATER PENETRATION TEST CONDUCTED TO AMCA STANDARD 500-L

TEST SIZE 1M x 1M (39.37" x 39.37") CORE AREA, 41.87" WD x 42.86" HG NOMINAL.
LOUVER FREE AREA 5.29 SQUARE FEET

CORE VENTILATION (M/S)	0.0	0.5	1.0	1.5	2.0	2.5	3.0	3.5	4.0	4.5	5.0	RAIN FALL / MPH
FPM	0	0	0	0	0	482	569	657	751	864	977	3 IN. / HR. RAIN FALL AND 29 MPH VELOCITY
FREE AREA VENTILATION (CFM)	-	-	-	-	-	5195	6126	7076	8086	9306	10,519	
FREE AREA VELOCITY (FPM)	-	-	-	-	-	982	1158	1338	1529	1759	1988	
EFFECTIVE RATING CLASS	A	A	A	A	A	A	A	A	C	C	C	
EFFECTIVENESS RATIO %	-	-	-	-	-	100	99.8	99.3	94.8	90.0	83.1	
FPM	0	0	0	0	0	482	578	659	763	847	974	8 IN. / HR. RAIN FALL AND 50 MPH VELOCITY
FREE AREA VENTILATION (CFM)	-	-	-	-	-	5189	6227	7096	8210	9115	10,483	
FREE AREA VELOCITY (FPM)	-	-	-	-	-	981	1177	1341	1552	1723	1982	
EFFECTIVE RATING CLASS	A	A	A	A	A	A	A	B	C	C	C	
EFFECTIVENESS RATIO %	-	-	-	-	-	100	99.0	96.5	92.9	88.6	80.8	

DISCHARGE COEFFICIENT

INTAKE Cd= 0.22 (CLASS 3)

WIND DRIVEN RAIN PENETRATION CLASSIFICATIONS	
CLASS	EFFECTIVENESS %
A	1 TO 0.99%
B	0.989% TO 0.95%
C	0.949 TO 0.80%
D	BELOW 0.80%

DISCHARGE LOSS COEFFICIENT CLASSIFICATIONS	
CLASS	DISCHARGE LOSS COEFFICIENT
1	0.4 AND ABOVE
2	0.3 TO 0.399
3	0.2 TO 0.299
4	0.199 AND BELOW

CLASS 1 LOSS COEFFICIENT HAS THE LEAST RESISTANCE TO AIRFLOW.



- CORE AREA IS THE FRONT OPENING OF A LOUVER ASSEMBLY WITH THE BLADES REMOVED.
- CORE AREA VELOCITY IS THE AIRFLOW RATE THROUGH THE LOUVER DIVIDED BY THE CORE AREA (39.37"x39.37").
- FREE AREA IS THE MINIMUM AREA THROUGH WHICH AIR CAN PASS. IT IS DETERMINED BY MULTIPLYING THE SUM OF THE MINIMUM DISTANCES BETWEEN INTERMEDIATE BLADES, TOP BLADE AND HEAD, BOTTOM BLADE AND SILL, BY THE MINIMUM DISTANCE BETWEEN JAMBS.
- DISCHARGE LOSS COEFFICIENT IS CALCULATED BY DIVIDING A LOUVER ACTUAL AIRFLOW RATE vs. A THEORETICAL AIRFLOW FOR THE OPENING. PROVIDING AN INDICATION OF THE LOUVER AIR FLOW CHARACTERISTICS.

ARROW UNITED CERTIFIES THAT THE MODEL EA-725-D SHOWN HEREIN IS LICENSED TO BEAR THE AMCA SEAL. THE RATINGS SHOWN ARE BASED ON TESTS AND PROCEDURES PERFORMED IN ACCORDANCE WITH AMCA PUBLICATION 511 AND COMPLY WITH THE REQUIREMENTS OF THE AMCA CERTIFIED RATINGS PROGRAM. THE AMCA CERTIFIED RATINGS SEAL APPLIES TO AIR PERFORMANCE, WATER PENETRATION, AND WIND DRIVEN RAIN RATINGS ONLY.

* AMCA ACCREDITED LABORATORY IS A LABORATORY EQUIPPED AND STAFFED TO CONDUCT TESTS ACCORDING TO THE APPROPRIATE AMCA TEST METHOD AND WHICH HAS BEEN LICENSED AS A AMCA ACCREDITED LABORATORY.