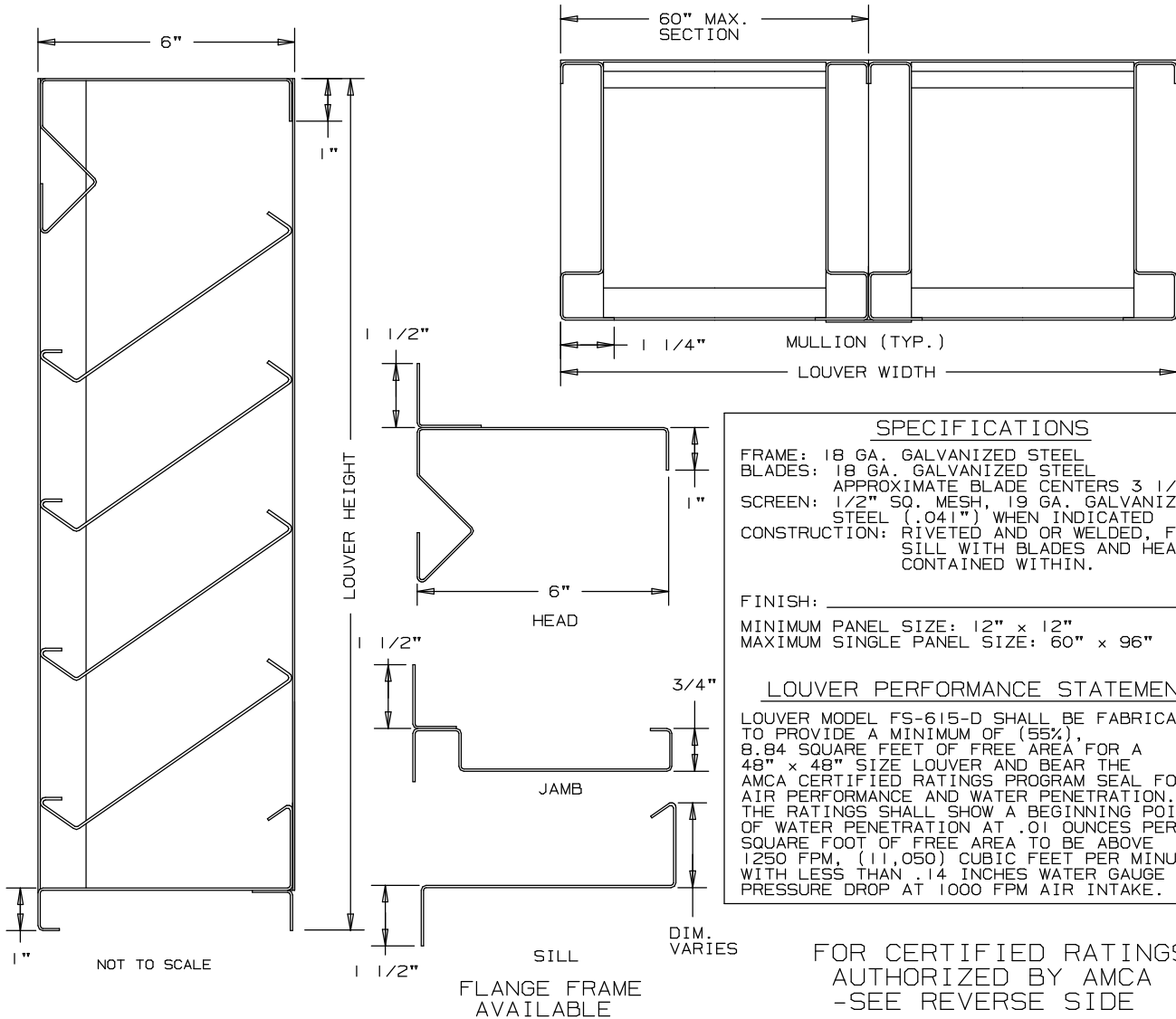


# ARROW FORMED STEEL LOUVERS 6" DEEP

# TYPE FS-615-D

## DRAIN LOUVER - 35° BLADES - STATIONARY



**SPECIFICATIONS**  
 FRAME: 18 GA. GALVANIZED STEEL  
 BLADES: 18 GA. GALVANIZED STEEL  
 APPROXIMATE BLADE CENTERS 3 1/2"  
 SCREEN: 1/2" SQ. MESH, 19 GA. GALVANIZED  
 STEEL (.041") WHEN INDICATED  
 CONSTRUCTION: RIVETED AND OR WELDED, FULL  
 SILL WITH BLADES AND HEAD  
 CONTAINED WITHIN.

FINISH: \_\_\_\_\_  
 MINIMUM PANEL SIZE: 12" x 12"  
 MAXIMUM SINGLE PANEL SIZE: 60" x 96"

**LOUVER PERFORMANCE STATEMENT**  
 LOUVER MODEL FS-615-D SHALL BE FABRICATED  
 TO PROVIDE A MINIMUM OF (55%),  
 8.84 SQUARE FEET OF FREE AREA FOR A  
 48" x 48" SIZE LOUVER AND BEAR THE  
 AMCA CERTIFIED RATINGS PROGRAM SEAL FOR  
 AIR PERFORMANCE AND WATER PENETRATION.  
 THE RATINGS SHALL SHOW A BEGINNING POINT  
 OF WATER PENETRATION AT .01 OUNCES PER  
 SQUARE FOOT OF FREE AREA TO BE ABOVE  
 1250 FPM, (11,050) CUBIC FEET PER MINUTE,  
 WITH LESS THAN .14 INCHES WATER GAUGE  
 PRESSURE DROP AT 1000 FPM AIR INTAKE.

FOR CERTIFIED RATINGS  
 AUTHORIZED BY AMCA  
 -SEE REVERSE SIDE

NOMINAL DEDUCTIONS WILL BE MADE TO THE OPENING SIZE GIVEN.

ITEM	QTY.	WIDTH	HEIGHT	WIDTH	HEIGHT	MULL	TYPE	LOC					
		OPENING SIZE		LOUVER SIZE			SCREENS						



**ARROW UNITED INDUSTRIES**  
 A DIVISION OF MESTEK, INC.  
 314 RIVERSIDE DRIVE  
 WYALUSING, PA 18853  
 TEL: (570) 746-1888 FAX: (570) 746-9286

AGENT: \_\_\_\_\_

ARCH./ENG. : \_\_\_\_\_  
 CONTR. : \_\_\_\_\_  
 PROJECT : \_\_\_\_\_  
 EDR: \_\_\_\_\_ ECN: \_\_\_\_\_ JOB: \_\_\_\_\_  
 DATE: \_\_\_\_\_ DWN. : \_\_\_\_\_ DWG. : \_\_\_\_\_

# LOUVER MODEL FS-615-D

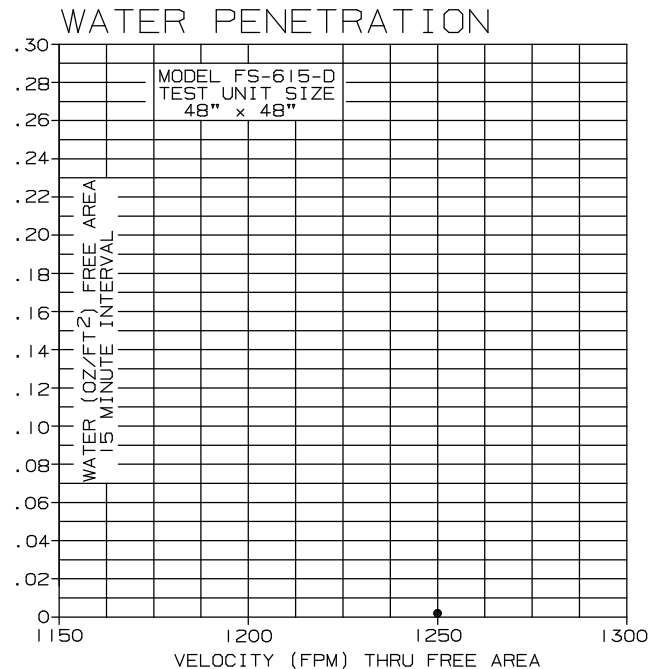
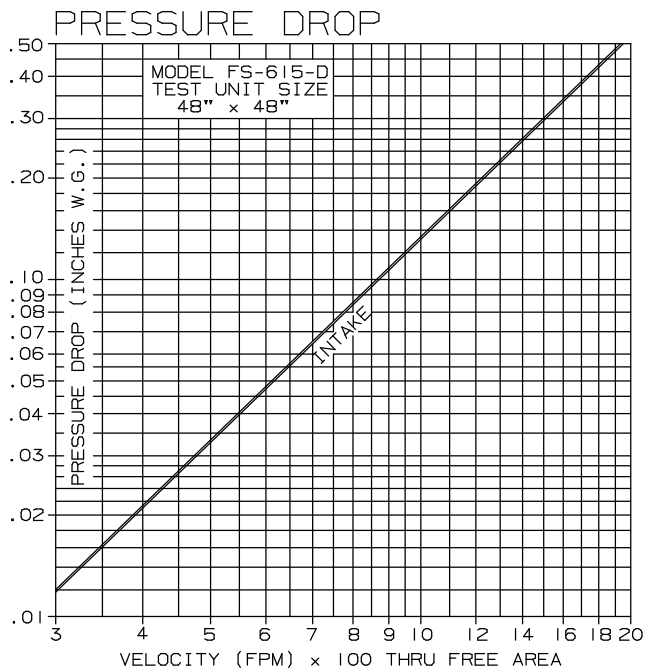
## DRAIN LOUVERS

### FORMED STEEL - STATIONARY

## PERFORMANCE DATA

TESTS OF A 48" x 48" SAMPLE BY AN AMCA REGISTERED LABORATORY  
 ACCORDING TO AMCA STANDARD 500 SHOWS THE BEGINNING POINT OF  
 WATER PENETRATION IS ABOVE 1250 FPM (FREE AREA VELOCITY)  
 WITH LESS THAN .13" W.G. PRESSURE DROP AT 950 FPM (INTAKE).

RATINGS DO NOT INCLUDE EFFECTS OF BIRDSCREEN.



• AMCA STANDARD 500 LIMITS TESTING OF WATER PENETRATION TO EITHER A MAXIMUM VELOCITY OF 1250 FPM OR 2.5 OUNCES OF WATER PER SQ. FT. OF LOUVER FREE AREA.

• THE BEGINNING POINT OF WATER PENETRATION IS ABOVE 1250 FPM THROUGH THE FREE AREA OF THE LOUVER.

### FREE AREA

		FREE AREA ( SQ. FT. )								
		WIDTH								
HEIGHT		12"	18"	24"	30"	36"	42"	48"	54"	60"
		12"	.33	.52	.72	.91	1.11	1.31	1.50	1.70
	24"	.82	1.32	1.81	2.31	2.80	3.30	3.79	4.29	4.78
	36"	1.30	2.08	2.86	3.64	4.42	5.20	5.98	6.76	7.54
	48"	1.89	3.02	4.15	5.28	6.41	7.54	8.84	9.81	10.94
	60"	2.32	3.70	5.09	6.48	7.87	9.26	10.65	12.04	13.43
	72"	2.89	4.63	6.37	8.10	9.84	11.58	13.32	15.05	16.79
	84"	3.39	5.42	7.45	9.48	11.52	13.55	15.58	17.61	19.64
	96"	3.90	6.24	8.59	10.93	13.27	15.61	17.95	20.30	22.64



ARROW UNITED CERTIFIES THAT THE MODEL FS-615-D LOUVERS SHOWN HEREIN IS LICENSED TO BEAR THE AMCA SEAL. THE RATINGS SHOWN ARE BASED ON TESTS AND PROCEDURES PERFORMED IN ACCORDANCE WITH AMCA PUBLICATION 511 AND COMPLY WITH THE REQUIREMENTS OF THE AMCA CERTIFIED RATINGS PROGRAM. THE CERTIFIED RATINGS SEAL APPLIES TO AIR PERFORMANCE AND WATER PENETRATION RATINGS.