

Backdraft Damper • 7½" Deep • Single Thickness Blades • Round Frame • Galvanized Steel • -35°F to 180°F Temperature

Standard Materials and Construction

FRAME: 16 GA. galvanized steel, 7½" deep.

BLADE: 16 GA. galvanized steel, reinforced for frames over 18" dia.

AXLE: ½" dia. plated steel stub.

BEARINGS: Flange oilite bronze.

SEALS: On frame, ¼" thick closed cell neoprene. Temperature range is -35°F to 180°F.

FINISH: Mill.

Options

Counter balance - mounted to blade or installed on extended shaft.

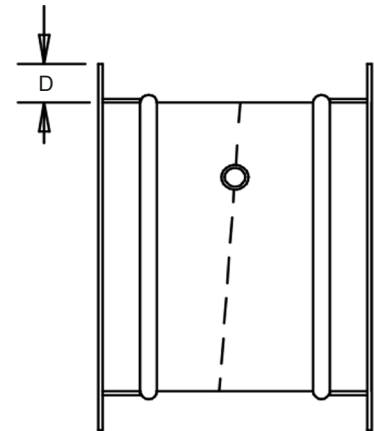
Notes

1. ¼" nominal deduction will be made to the opening size given.
2. Please contact the factory for damper sizes larger than 36" diameter.
3. When ordering a counter balance, please specify type: assist or resist opening.
4. Damper sizes of 12" dia. and less shall have a counter balance located on an extended shaft only.
5. To calculate approximate shipping weight (lbs./in.), use following formula:

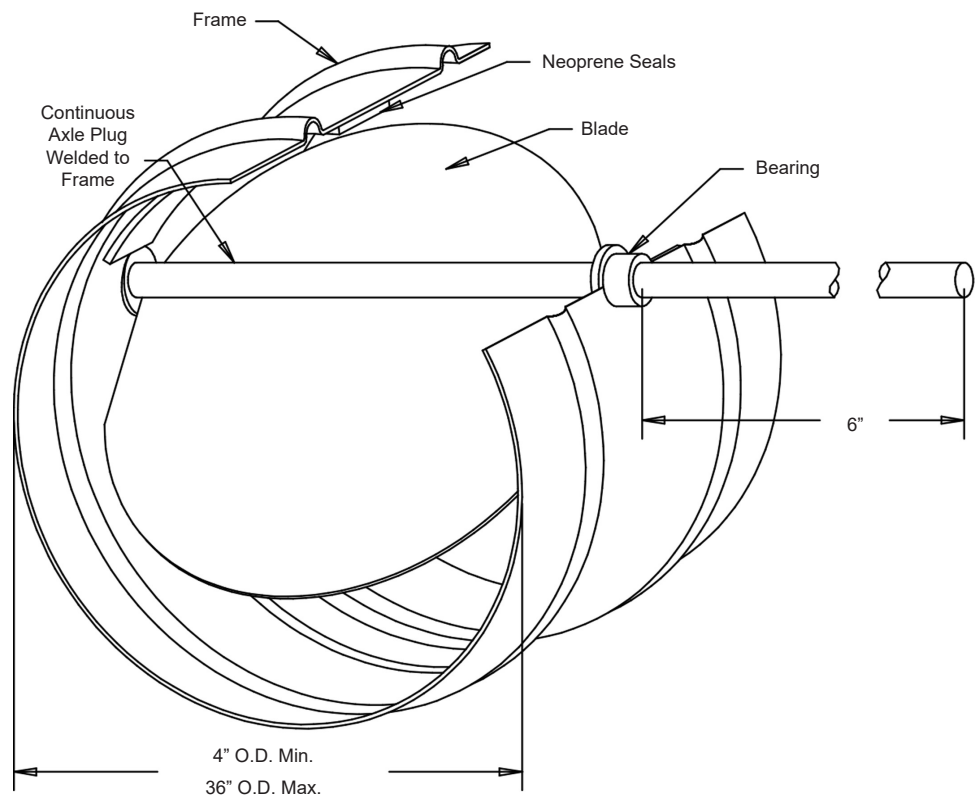
$$\text{Damper Circumference (Diameter [in.] } \times 3.141) \times 0.5$$

Damper Sizes


| Minimum Size | Maximum Size |
|--------------|--------------|
| 4" O.D. | 36" O.D. |



Equal leg angles are available. They are welded to frames at intermittent spacing and caulked between welds. Flange Height "D" varies with damper diameter.



Please inquire for larger sizes.

| | | | | | | | | |
|---------------|-----|---------------------|-----------------|--------|---------|--|------|---|
| | | | | | | | |  |
| | | | | | | | | |
| Item # | Qty | Damper Size O.D. | Assist | Resist | Remarks | | | |
| | | | Counter Balance | | | | | |
| | | | | | | | | <u>Union Made</u> |
| Arch. / Eng.: | | | EDR: | | ECN: | | Job: | |
| Contractor: | | | | | | | | |
| Project: | | | Date: | | DWN: | | DWG: | |