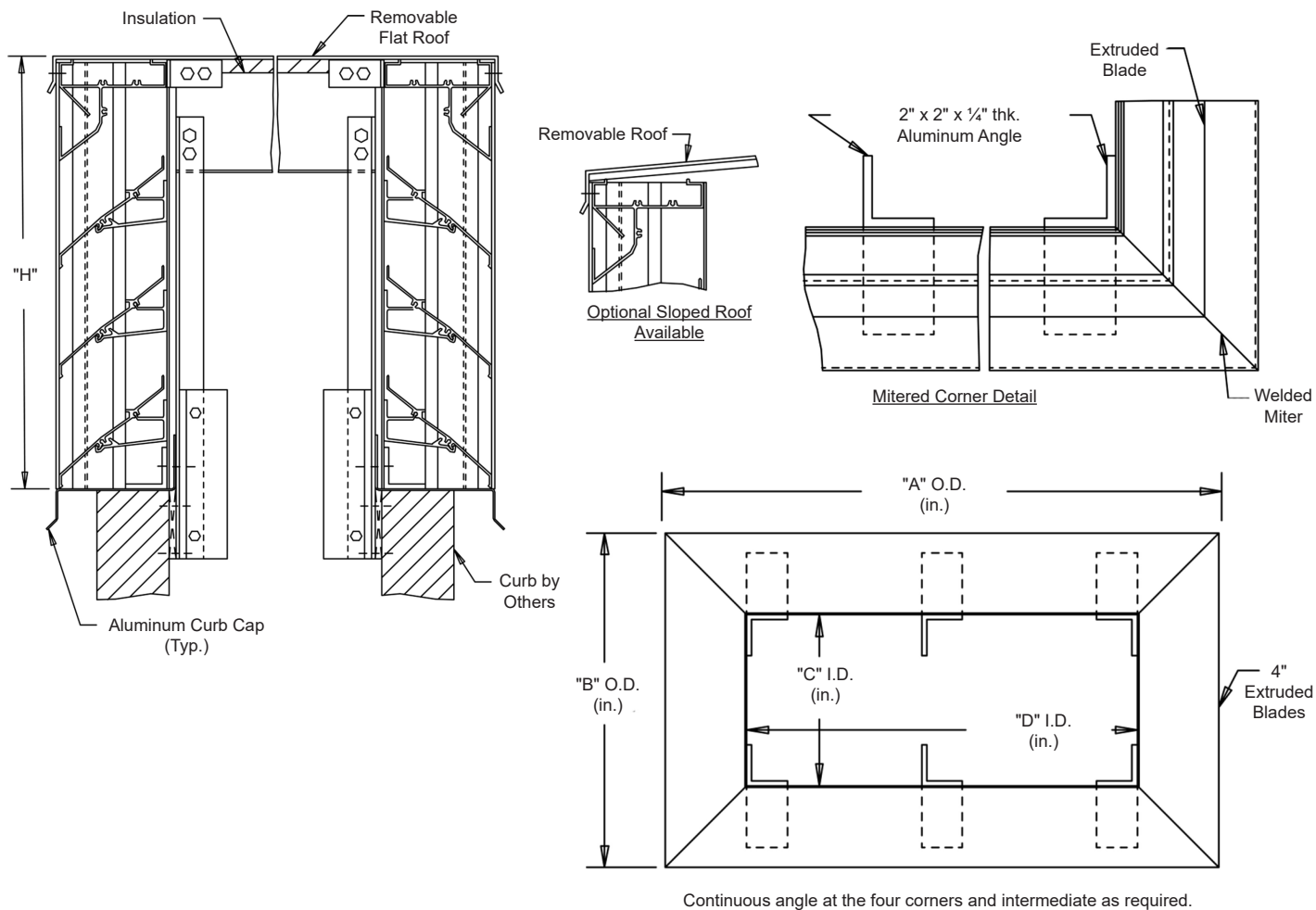


Interior Fastening Installation

ANGLES - All corners and intermediate to extend from roof into curb.



Standard Materials and Construction


MATERIAL: .081" thick (nominal) or .125" thick (nominal) extruded aluminum, 6063-T52/T6 alloy, with reinforcing rib bosses.

ROOF: .060" thick (nominal) sheet aluminum removable roof, reinforced with aluminum bracing where required to take a snow load of 40 lbs./sq.ft.. plus a required safety factor.

SCREENS: (When indicated)
Bird Screen - 1/2" square mesh, 19 GA. galvanized steel, on interior.

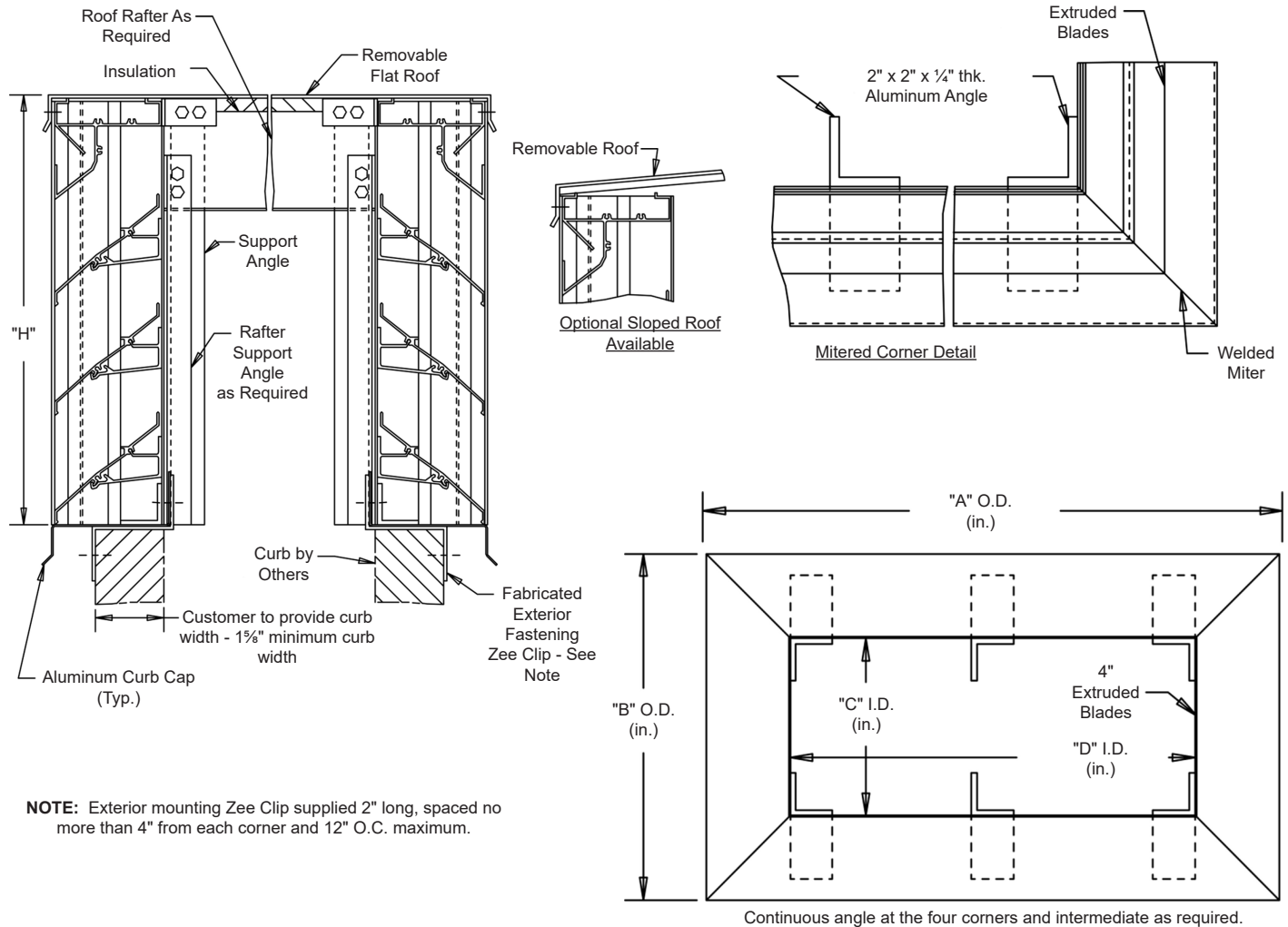
INSULATION: Underside of roof is lined with ½" thick insulation.

NOTES: Penthouse dimensions "A" or "B" exceeding 84" shall be shipped in sections for field assembly by others.

											
Item #	Qty	A	B	C	D	H	Mullion	Type	Location		
		Penthouse Dimensions						Screens			
Arch. / Eng. :						EDR:		ECN:		Job:	
Contractor:											
Project:						Date:		DWN:		DWG:	

MODEL SPH-20-F**Penthouse Louver • 4" Blade Width • Stationary Straight Blades • Miter Corner • Extruded Aluminum**

Page 2

Exterior Fastening Installation**Standard Materials and Construction****MATERIAL:** .081" thick (nominal) or .125" thick (nominal) extruded aluminum, 6063-T52/T6 alloy, with reinforcing rib bosses.**ROOF:** .060" thick (nominal) sheet aluminum removable roof, reinforced with aluminum bracing where required to take a snow load of 40 lbs./sq.ft., plus a required safety factor.**SCREENS:** (When indicated)
Bird Screen - 1/2" square mesh, 19 GA. galvanized steel, on interior.**INSULATION:** Underside of roof is lined with 1/2" thick insulation.**NOTES:** Penthouse dimensions "A" or "B" exceeding 84" shall be shipped in sections for field assembly by others.

Item #	Qty	A	B	C	D	H	Mullion	Type	Location			
		Penthouse Dimensions						Screens				Union Made
Arch. / Eng. :							EDR:		ECN:		Job:	
Contractor:												
Project:							Date:		DWN:		DWG:	