

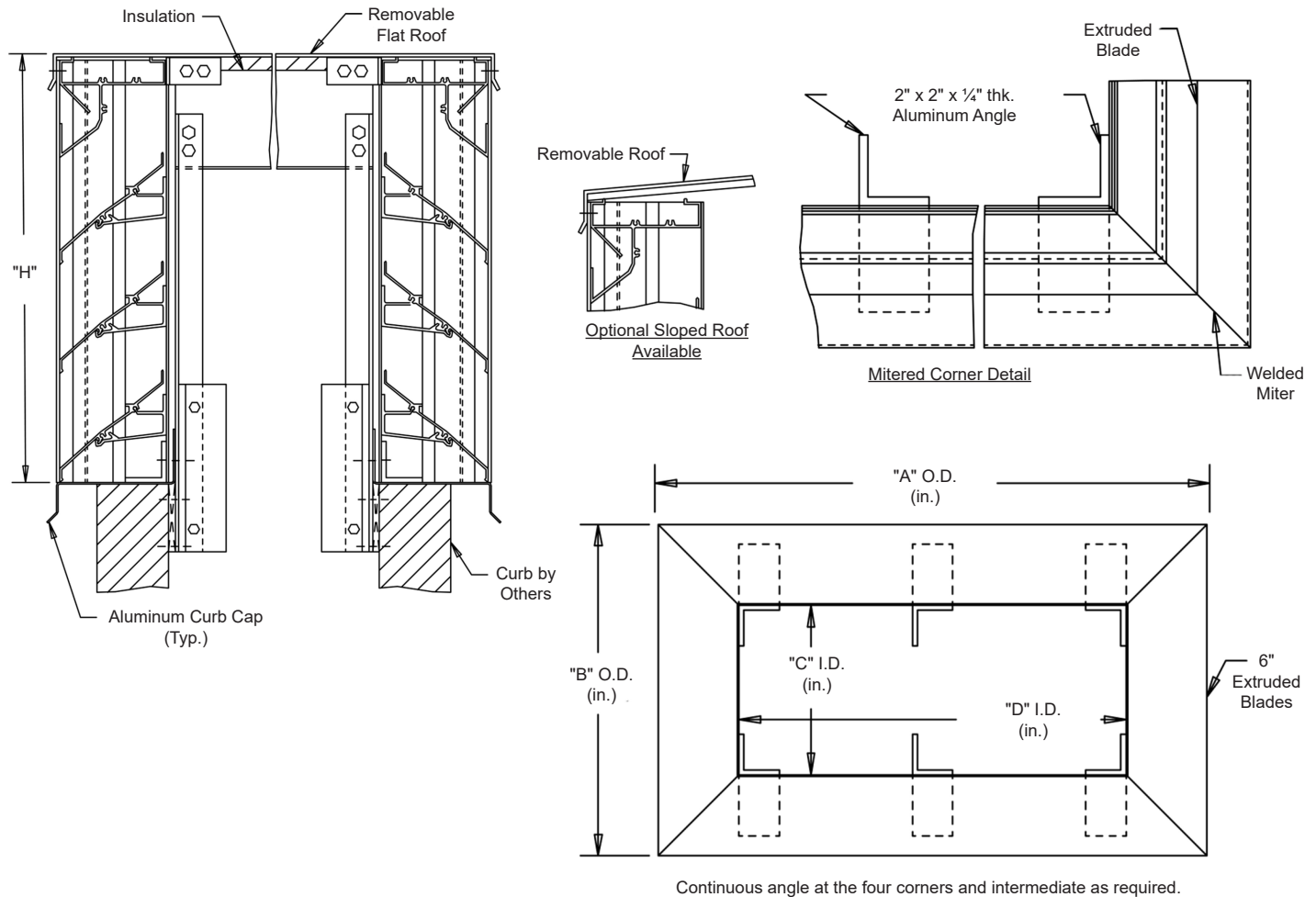
# MODEL SPH-20-F-6

**Penthouse Louver** • 6" Blade Width • Stationary Straight Blades • Miter Corner • Extruded Aluminum

Page 1

## Interior Fastening Installation

**ANGLES** - All corners and intermediate to extend from roof into curb.



## Standard Materials and Construction


**MATERIAL:** .081" thick (nominal) or .125" thick (nominal) extruded aluminum, 6063-T52/T6 alloy, with reinforcing rib bosses.

**ROOF:** .060" thick (nominal) sheet aluminum removable roof, reinforced with aluminum bracing where required to take a snow load of 40 lbs./sq.ft., plus a required safety factor.

**SCREENS:** (When indicated)  
Bird Screen - 1/2" square mesh, 19 GA. galvanized steel, on interior.

**INSULATION:** Underside of roof is lined with ½" thick insulation.

**NOTES:** Penthouse dimensions "A" or "B" exceeding 84" shall be shipped in sections for field assembly by others.

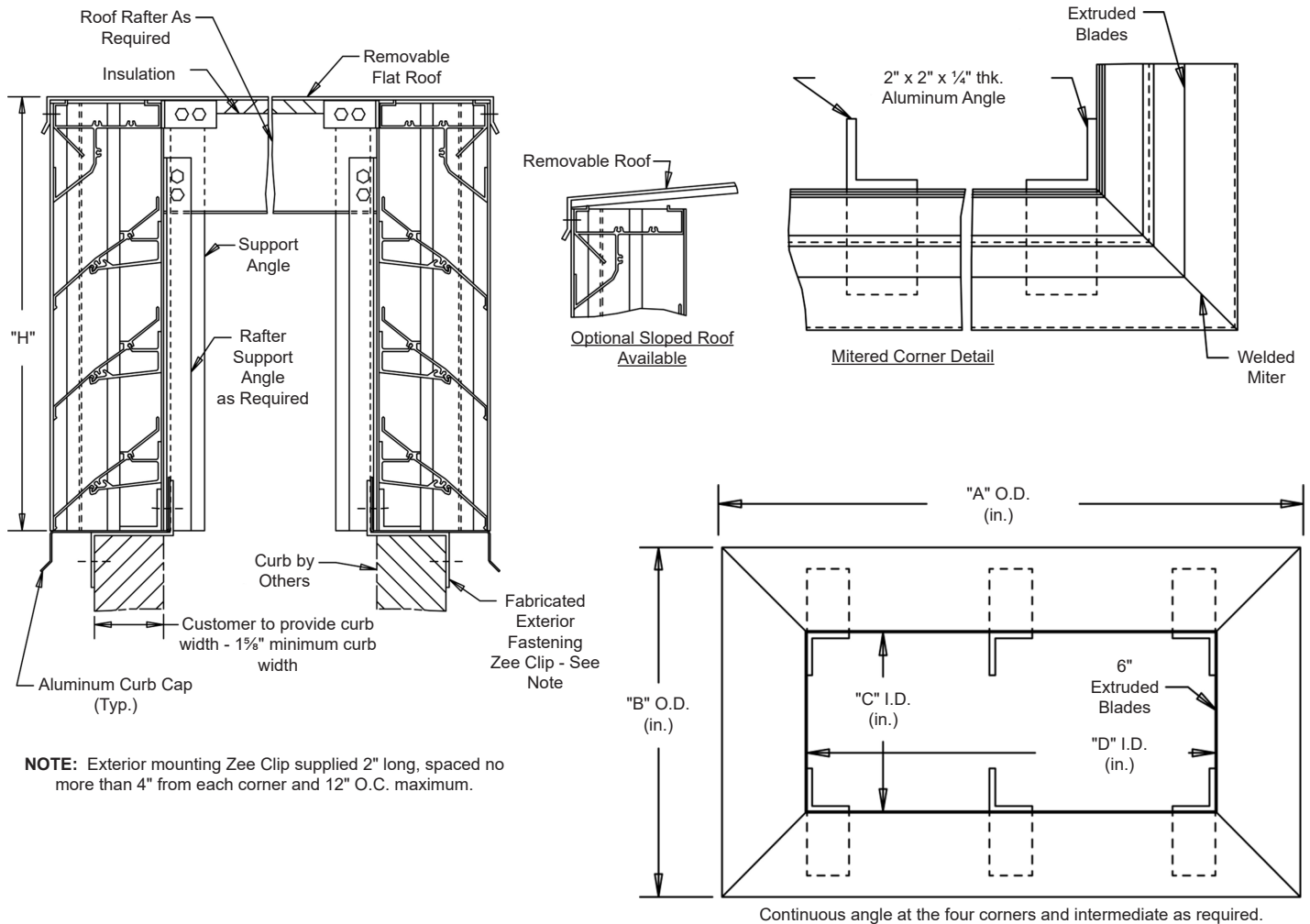
											
Item #	Qty	A	B	C	D	H	Mullion	Type	Location		
		Penthouse Dimensions						Screens			<u>Union Made</u>
Arch. / Eng. :						EDR:		ECN:		Job:	
Contractor:											
Project:						Date:		DWN:		DWG:	



In the interest of product development, Arrow United reserves the right to make changes without notice.  
450 Riverside Dr • Wyalusing PA, 18853 • Phone 570-746-1888 • Fax 570-746-9286  
AUI-14-02-02

**MODEL SPH-20-F-6****Penthouse Louver • 6" Blade Width • Stationary Straight Blades • Miter Corner • Extruded Aluminum**

Page 2

**Interior Fastening Installation**

**NOTE:** Exterior mounting Zee Clip supplied 2" long, spaced no more than 4" from each corner and 12" O.C. maximum.

**Standard Materials and Construction**

**MATERIAL:** .081" thick (nominal) or .125" thick (nominal) extruded aluminum, 6063-T52/T6 alloy, with reinforcing rib bosses.

**ROOF:** .060" thick (nominal) sheet aluminum removable roof, reinforced with aluminum bracing where required to take a snow load of 40 lbs./sq.ft., plus a required safety factor.

**SCREENS:** (When indicated)  
Bird Screen - 1/2" square mesh, 19 GA. galvanized steel, on interior.

**INSULATION:** Underside of roof is lined with 1/2" thick insulation.

**NOTES:** Penthouse dimensions "A" or "B" exceeding 84" shall be shipped in sections for field assembly by others.

<b>Item #</b>	<b>Qty</b>	<b>A</b>	<b>B</b>	<b>C</b>	<b>D</b>	<b>H</b>	<b>Mullion</b>	<b>Type</b>	<b>Location</b>		
<b>Penthouse Dimensions</b>								<b>Screens</b>		<b>Union Made</b>	
<b>Arch. / Eng. :</b>						<b>EDR:</b>		<b>ECN:</b>		<b>Job:</b>	
<b>Contractor:</b>											
<b>Project:</b>						<b>Date:</b>		<b>DWN:</b>		<b>DWG:</b>	