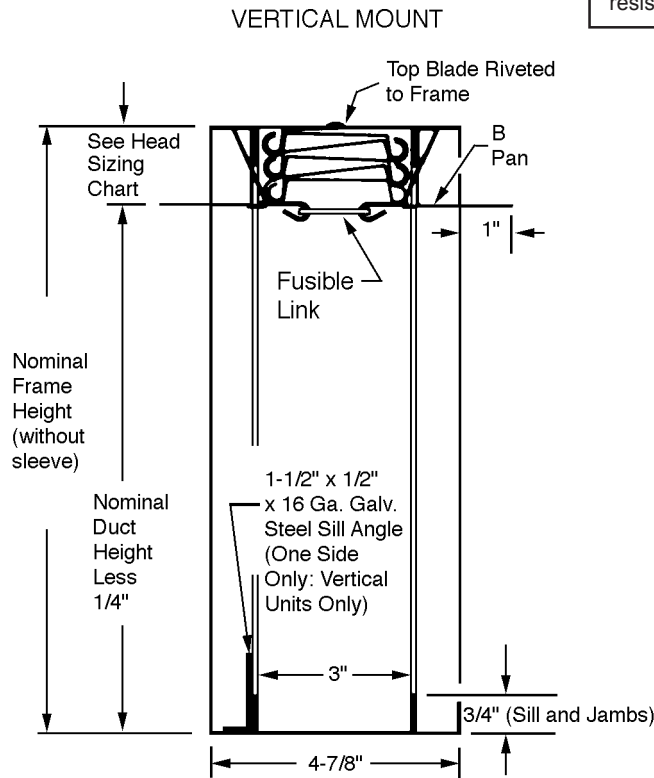


FIRE/SEAL® UL-CLASSIFIED 3-HR. STATIC RATED FIRE DAMPER

MODEL 317B
Vertical & Horizontal

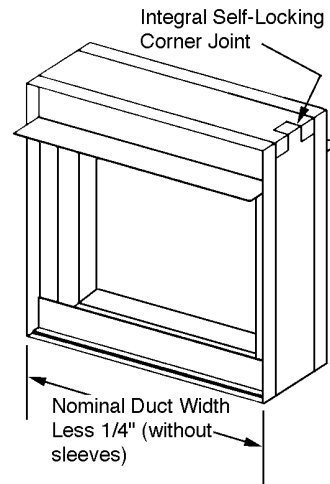
Classified by Underwriters Laboratories as a 3-hour fire protection rated Fire Damper, FOR USE IN STATIC SYSTEMS, in accordance with Standards UL-555 and NFPA-90A, for the protection of openings in fire partitions having a fire resistance rating of 3 hours or more.



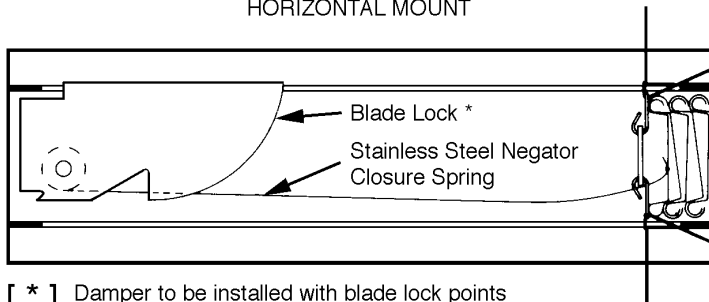
UNDERWRITERS LABORATORIES INC.
CLASSIFIED
FIRE DAMPERS
FIRE RESISTANCE RATING 3 HR.
SEE U.L. CLASSIFIED BUILDING MATERIALS INDEX

Arrow United Industries

California State Fire Marshal
Listing No. 3225-1328:100



HORIZONTAL MOUNT



[*] Damper to be installed with blade lock points facing DOWNWARD and with access from above.

STANDARD MATERIALS & CONSTRUCTION:

- FRAME: One-piece rollformed 22-GA galvanized steel.
- BLADES: 22-GA galvanized steel curtain-type.
- FUSIBLE LINK: UL-listed 165°F; replaceable. (Optional 212°F available at no additional charge.)
- CLOSURE SPRINGS (Horizontal Models): Heat-treated Type 301 stainless steel constant force coiled negator type.

DIMENSIONAL DATA:

- MINIMUM SIZE: 4" W x 3" H (Duct), 4" W x 5" H (Frame).
- MAXIMUM SIZE - VERTICAL (Galvanized Steel):
 - Single Panel: 36" W x 32" H (Duct), 36" W x 36" H (Frame).
 - Multiple Panel: 72" W x 68" H (Duct), 72" W x 72" H (Frame); in max. panels of 36"W x 32"H (Duct), 36"W x 36"H (Frame).
- MAXIMUM SIZE - VERTICAL (Stainless Steel):
 - Single Panel: 47" W x 42" H (Duct), 47" W x 48" H (Frame).
 - Multiple Panel: 93" W x 42" H (Duct), 93" W x 48" H (Frame); in max. panels of 47" W x 42" H (Duct), 47" W x 48" H (Frame).
- MAXIMUM SIZE - HORIZONTAL (Galvanized Steel):
 - Single Panel: 48" W x 43" H (Duct), 48" W x 48" H (Frame).
 - Multiple Panel: 72" W x 32" H (Duct), 72" W x 36" H (Frame). in max. panels of 36" W x 32" H (Duct), 36" W x 36" H (Frame).

NOTE: Unassembled multiple units do not include mullions.

- PROJECT:**
- LOCATION:**
- ARCHITECT:**
- ENGINEER:**
- CONTRACTOR:**
- PONUMBER:**
- DATE:**

Additional information on reverse side.

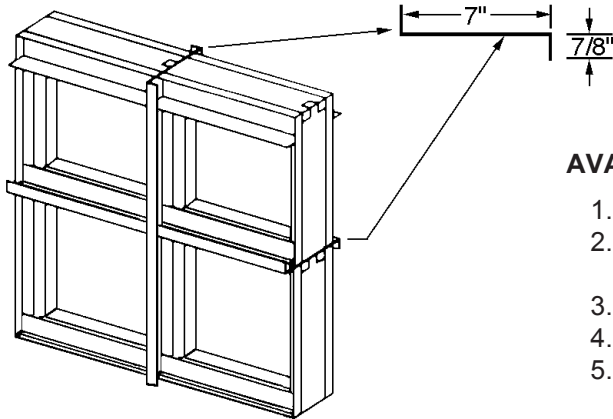
Arrow United Industries
A Division of Mestek, Inc.
314 Riverside Drive • Wyalusing, PA 18853
Ph: (570)-746-1888 Fax: (570)-746-9286
www.arrowunited.com

MEMBER OF AMCA

ARROW UNITED INDUSTRIES SUBMITTAL DATA

FIRE/SEAL® UL-CLASSIFIED
3-HR. STATIC RATED FIRE DAMPER

MODEL 317B



14 Ga. "ZEE MULLION" required (field-supplied) for Multiple Panel Vertical Mount Dampers (Model 317BV) only.
Note: Minimum sleeve length is 9".

AVAILABLE OPTIONS:

1. Factory-supplied sleeves (20-Ga. through 10-Ga.).
2. Type 304 stainless steel construction. (available for Vertical Mount dampers only).
3. 212°F fusible link.
4. Electro Thermal Link [ETL®].
5. SPDT "closed damper" position indicator switch.

VERTICAL (Model 317BV)			HEAD SIZING CHARTS	HORIZONTAL (Model 317BH)					
IF NOMINAL DUCT HEIGHT IS:	INCHES TO ADD FOR HEAD			IF NOMINAL DUCT HEIGHT IS:	INCHES TO ADD FOR HEAD				
SINGLE PANEL									
GALVANIZED OR STAINLESS	3" thru 18"	2"		3" THRU 18"	2"				
	19" thru 28"	3"		19" THRU 28"	3"				
	29" thru 32"	4"		29" THRU 40"	4"				
STAINLESS ONLY	33" thru 40"	4"		41" THRU 43"	5"				
	41"	5"							
	42"	6"		GALVANIZED STEEL ONLY (STAINLESS STEEL NOT AVAILABLE)					
MULTIPLE PANEL									
GALVANIZED ONLY (STAINLESS NOT AVAILABLE)	33" thru 37"	2"							
	38" thru 57"	3"							
	58" thru 68"	4"							

See DIMENSIONAL DATA on front side.

VERTICAL (MODEL 317BV)

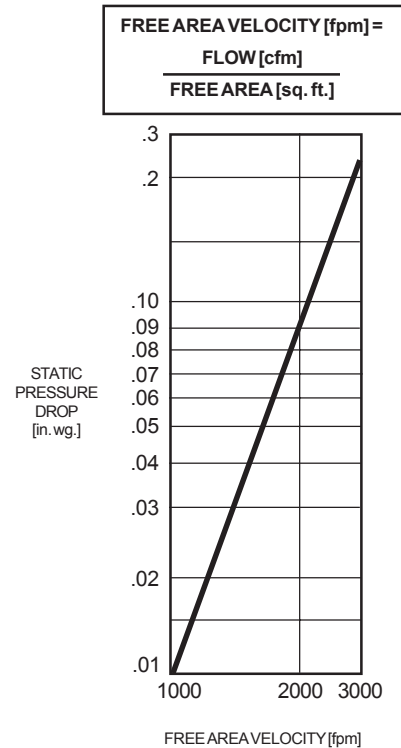
FREE AREA [sq. ft.] Duct Width (in.)

Duct Height (in.)	4	8	12	16	20	24	28	32	36	40	44	47
4	.04	.09	.16	.22	.29	.35	.41	.47	.54	.58	.64	.70
8	.09	.27	.44	.62	.79	.97	1.1	1.3	1.5	1.6	1.8	1.9
12	.16	.44	.73	1.0	1.3	1.6	1.9	2.1	2.4	2.6	2.9	3.2
16	.22	.62	1.0	1.4	1.8	2.2	2.6	3.0	3.4	3.7	4.1	4.4
20	.29	.79	1.3	1.8	2.3	2.8	3.3	3.8	4.3	4.7	5.2	5.7
24	.35	.97	1.6	2.2	2.8	3.4	4.1	4.7	5.3	5.8	6.4	6.9
28	.41	1.1	1.9	2.6	3.3	4.1	4.8	5.5	6.2	6.8	7.5	8.2
32	.47	1.3	2.1	3.0	3.8	4.7	5.5	6.3	7.2	7.8	8.7	9.4
36	.51	1.4	2.3	3.2	4.2	5.0	5.9	6.8	7.7	8.6	9.4	10.2
40	.58	1.6	2.6	3.6	4.6	5.7	6.6	7.7	8.7	9.5	10.5	11.4
42	.61	1.7	2.8	3.8	5.0	6.1	7.2	8.3	9.3	10.2	11.3	12.3

HORIZONTAL (MODEL 317BH)

FREE AREA [sq. ft.] Duct Width (in.)

Duct Height (in.)	4	8	12	16	20	24	28	32	36	40	44	48
4	.06	.2	.3	.4	.5	.5	.6	.7	.8	.9	1.0	1.1
8	.2	.4	.6	.8	1.0	1.2	1.4	1.6	1.8	2.0	2.2	2.4
12	.2	.5	.9	1.2	1.5	1.8	2.1	2.4	2.7	3.0	3.4	3.7
16	.3	.7	1.2	1.6	2.0	2.4	2.8	3.3	3.7	4.1	4.5	5.0
20	.4	.9	1.4	2.0	2.5	3.0	3.6	4.1	4.7	5.2	5.7	6.3
24	.4	1.1	1.7	2.4	3.0	3.7	4.3	5.0	5.6	6.3	6.9	7.5
28	.5	1.2	2.0	2.8	3.5	4.3	5.0	5.8	6.5	7.3	8.0	8.8
32	.6	1.5	2.3	3.2	4.0	4.9	5.8	6.7	7.5	8.4	9.3	10.1
36	.7	1.6	2.6	3.6	4.6	5.5	6.5	7.5	8.5	9.5	10.4	11.4
40	.7	1.8	2.9	4.0	5.1	6.2	7.3	8.4	9.4	10.5	11.6	12.7
43	.7	1.9	3.0	4.1	5.3	6.5	7.6	8.8	9.9	11.1	12.3	13.4



IN THE INTEREST OF PRODUCT DEVELOPMENT, ARROW UNITED RESERVES THE RIGHT TO MAKE CHANGES WITHOUT NOTICE.

 Arrow United Industries
A Division of Mestek, Inc.
314 Riverside Drive • Wyalusing, PA 18853
Ph: (570)-746-1888 Fax: (570)-746-9286
www.arrowunited.com