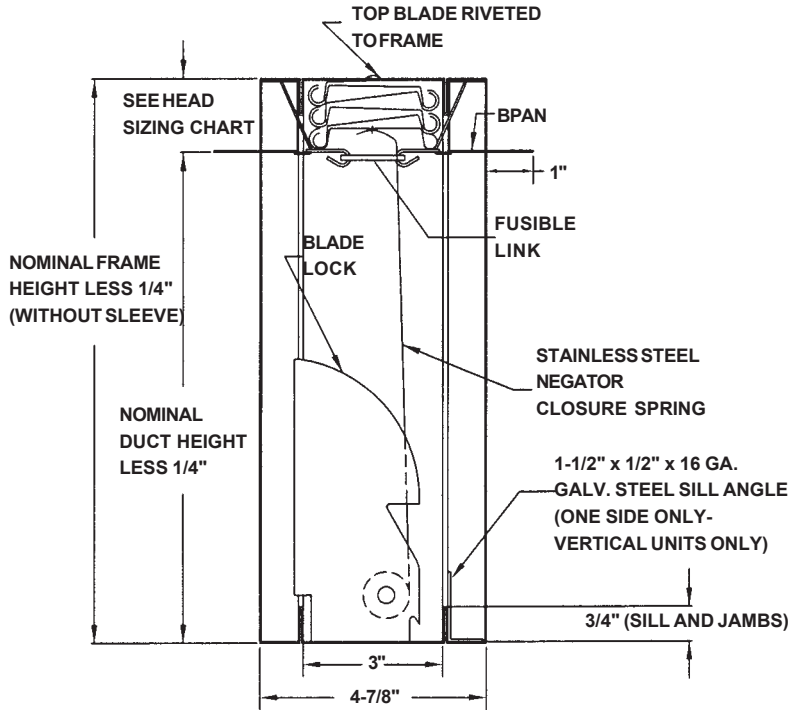


FIRE/SEAL® UL-CLASSIFIED 1 1/2-HR. DYNAMIC RATED FIRE DAMPER

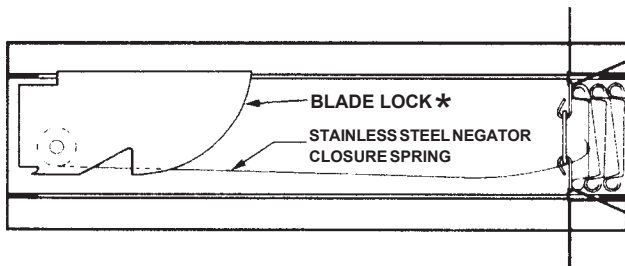
MODEL D17B
Vertical & Horizontal Mount

Classified by Underwriters Laboratories as a 1 1/2-hour fire protection rated Fire Damper, FOR USE IN DYNAMIC SYSTEMS, in accordance with Standards UL-555 and NFPA-90A, for the protection of openings in fire partitions having a fire resistance rating of less than 3 hours.

VERTICAL MOUNT



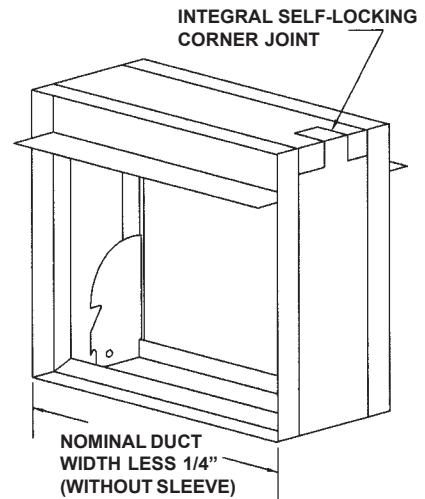
HORIZONTAL MOUNT



* DAMPER TO BE INSTALLED WITH BLADE LOCK POINTS FACING DOWNWARD AND WITH ACCESS FROM ABOVE

UNDERWRITERS LABORATORIES INC.
CLASSIFIED
 FIRE DAMPERS
 FIRE RESISTANCE RATING **1 1/2 HR.**
 SEE U.L. CLASSIFIED BUILDING MATERIALS INDEX

California State Fire Marshal
 Listing No. 3225-1328:100



DIMENSIONAL DATA:


MINIMUM SIZE: 6" W x 4" H (Duct), 6" W x 6" H (Frame).

MAXIMUM SIZE: VERTICAL (Model D17BV):
 Single Panel: 36"W x 32"H (Duct), 36"W x 36"H (Frame).
 HORIZONTAL (Model D17BH):
 Single Panel: 24"W x 21"H (Duct), 24"W x 24"H (Frame).

STANDARD MATERIALS & CONSTRUCTION:

- FRAME: One-piece rollformed 22-GA galvanized steel.
- BLADES: 22-GA galvanized steel curtain-type.
- FUSIBLE LINK: UL-listed 165°F; replaceable. (Optional 212°F available **(Vertical Mount Only)** at no additional charge.)
- CLOSURE SPRINGS: Heat-treated Type 301 stainless steel constant force coiled negator type.

- PROJECT:
- LOCATION:
- ARCHITECT:
- ENGINEER:
- CONTRACTOR:
- PO NUMBER:
- DATE:

 Arrow United Industries
 A Division of Mestek, Inc.
 314 Riverside Drive • Wyalusing, PA 18853
 Ph: (570)-746-1888 Fax: (570)-746-9286
 www.arrowunited.com

MEMBER OF AMCA

Additional information
 on reverse side.

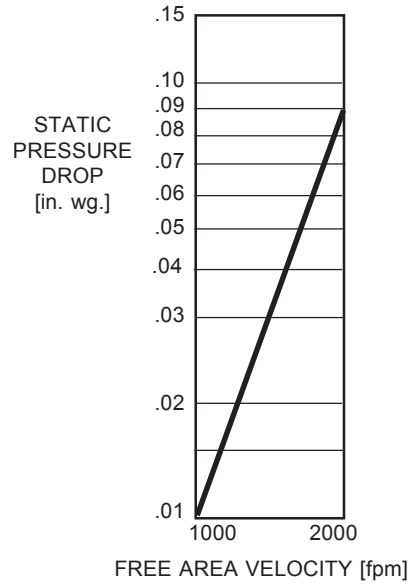
ARROW UNITED INDUSTRIES SUBMITTAL DATA

FIRE/SEAL® UL-CLASSIFIED 1 1/2-HR. DYNAMIC RATED FIRE DAMPER

MODEL D17B

HEAD SIZING CHART

IF NOMINAL DUCT HEIGHT IS:	INCHES TO ADD FOR HEAD:
3" THRU 18"	2"
17" THRU 28"	3"
29" THRU 32"	4"



See DIMENSIONAL DATA on front side.

AVAILABLE OPTIONS:

1. Factory-supplied sleeves (20-GA through 10-GA).
2. Type 304 stainless steel construction.
3. 212°F fusible link (Vertical Mount Only).
4. Electro Thermal Link [ETL®].
5. SPDT "closed damper" position indicator switch.
6. "Pull-Ring" for ease of reopening closed damper.

$$\text{FREE AREA VELOCITY [fpm]} = \frac{\text{FLOW [cfm]}}{\text{FREE AREA [sq. ft.]}}$$

FREE AREA [sq. ft.]
Duct Width (in.)

	8	12	16	20	24	28	32	36
8	.4	.6	.8	1.0	1.2	1.4	1.6	1.8
12	.5	.9	1.2	1.5	1.8	2.1	2.4	2.7
16	.7	1.2	1.6	2.0	2.4	2.8	3.3	3.7
20	.9	1.4	2.0	2.5	3.0	3.6	4.1	4.7
24	1.1	1.7	2.4	3.0	3.7	4.3	5.0	5.6
28	1.2	2.0	2.8	3.5	4.3	5.0	5.8	6.5
32	1.5	2.3	3.2	4.0	4.9	5.8	6.7	7.5

Duct Height (in.)

NOTES:

1. Rated at 2000 fpm, 4 in. wg.
2. When a dynamic fire damper closes under airflow conditions, due to inertia, a momentary negative pressure spike (vacuum) can occur on the downstream side of the closed damper. This situation should be taken into consideration by the Engineer/System Designer.

IN THE INTEREST OF PRODUCT DEVELOPMENT, ARROW UNITED RESERVES THE RIGHT TO MAKE CHANGES WITHOUT NOTICE.



Arrow United Industries
A Division of Mestek, Inc.
314 Riverside Drive • Wyalusing, PA 18853
Ph: (570)-746-1888 Fax: (570)-746-9286
www.arrowunited.com