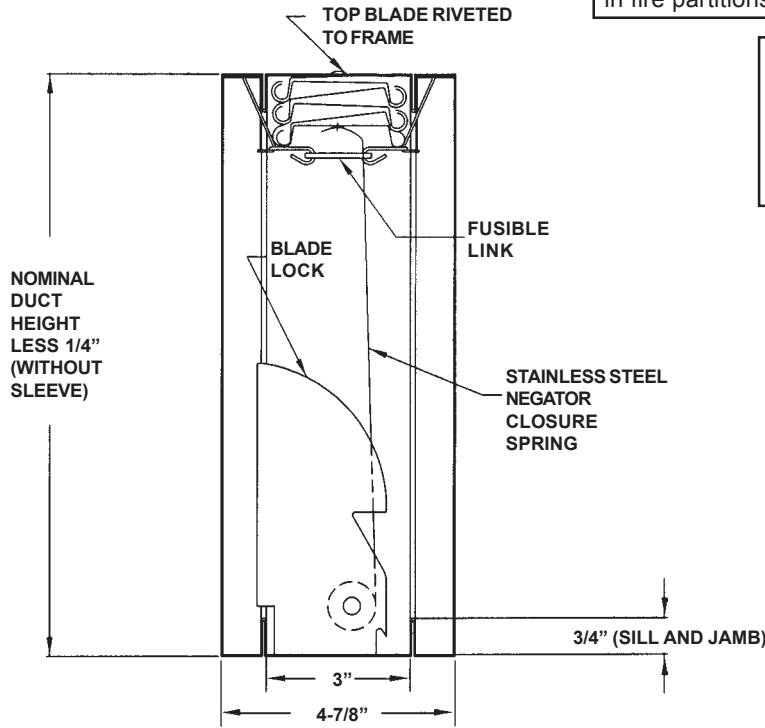


FIRE/SEAL® UL-CLASSIFIED 3-HR. DYNAMIC RATED FIRE DAMPER

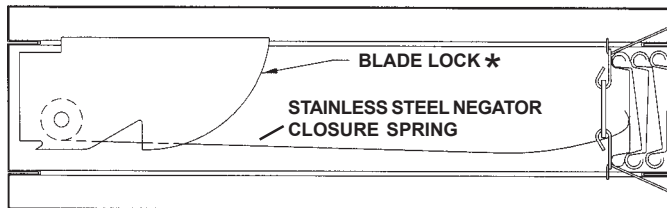
MODEL D37A
Vertical & Horizontal Mount

Classified by Underwriters Laboratories as a 3-hour fire protection rated Fire Damper, FOR USE IN DYNAMIC SYSTEMS, in accordance with Standards UL-555 and NFPA-90A, for the protection of openings in fire partitions having a fire resistance rating of 3 hours or more.

VERTICAL MOUNT



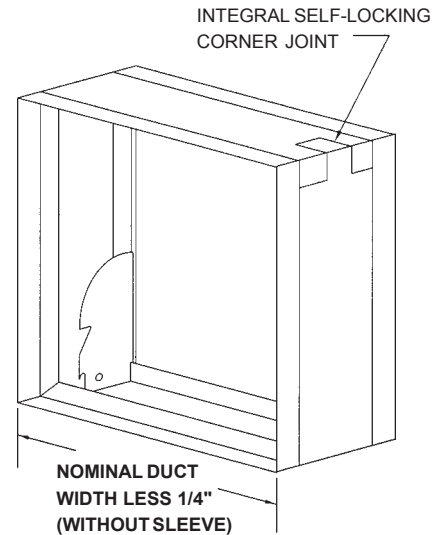
HORIZONTAL MOUNT



* DAMPER TO BE INSTALLED WITH BLADE LOCK POINTS FACING DOWNWARD AND WITH ACCESS FROM ABOVE

**UNDERWRITERS LABORATORIES
INC. CLASSIFIED**
FIRE DAMPERS
FIRE RESISTANCE RATING **3 HR.**
SEE U.L. CLASSIFIED BUILDING MATERIALS INDEX

California State Fire Marshal
Listing No. 3225-1328:101




DIMENSIONAL DATA:

MINIMUM SIZE: 6" W x 6" H.
 MAXIMUM SIZE - **VERTICAL**
 Single Panel: 36"W x 36"H.
HORIZONTAL
 Single Panel: 24"W x 24"H

STANDARD MATERIALS & CONSTRUCTION:

FRAME: One-piece rollformed 22-GA galvanized steel.
 BLADES: 22-GA galvanized steel curtain-type.
 FUSIBLE LINK: UL-listed 165°F; replaceable.
 (Optional 212°F available (**Vertical Mount Only**) at no additional charge.)
 CLOSURE SPRINGS: Heat-treated Type 301 stainless steel constant force coiled negator type.

PROJECT:
 LOCATION:
 ARCHITECT:
 ENGINEER:
 CONTRACTOR:
 PO NUMBER:
 DATE:



Arrow United Industries
 A Division of Mestek, Inc.
 314 Riverside Drive • Wyalusing, PA 18853
 Ph: (570)-746-1888 Fax: (570)-746-9286
 www.arrowunited.com

Additional information
 on reverse side

ARROW UNITED INDUSTRIES SUBMITTAL DATA

FIRE/SEAL® UL-CLASSIFIED 3-HR. DYNAMIC RATED FIRE DAMPER

MODEL D37A

AVAILABLE OPTIONS:

1. Factory-supplied sleeves (20-GA through 10-GA).
2. Type 304 stainless steel construction.
3. 212°F fusible link (Vertical Mount Only).
4. Electro Thermal Link [ETL®].
5. SPDT "closed damper" position indicator switch.

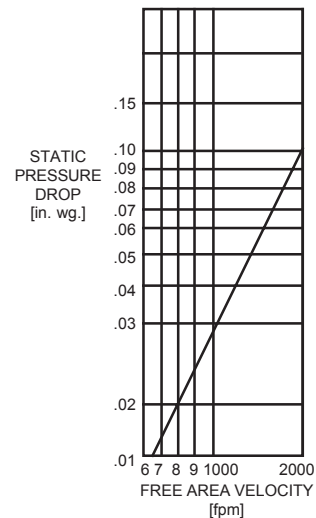
NOTES:

1. Rated at 2000 fpm, 4 in. wg.
2. When a dynamic fire damper closes under airflow conditions, due to inertia, a momentary negative pressure spike (vacuum) can occur on the downstream side of the closed damper. This situation should be taken into consideration by the Engineer/System Designer.

$$\text{FREE AREA VELOCITY [fpm]} = \frac{\text{FLOW [cfm]}}{\text{FREE AREA [sq. ft.]}}$$

FREE AREA [sq. ft.]
Duct Width (in.)

Duct Height (in.)	FREE AREA [sq. ft.] Duct Width (in.)							
	8	12	16	20	24	28	32	36
8	0.2	0.3	0.5	0.6	0.7	0.8	1.0	1.2
12	0.4	0.6	0.8	1.0	1.2	1.5	1.7	2.0
16	0.5	0.8	1.0	1.4	1.7	2.0	2.3	2.7
20	0.7	1.0	1.4	1.9	2.1	2.6	3.0	3.5
24	0.8	1.1	1.7	2.2	2.8	3.1	3.6	4.2
28	1.0	1.4	2.0	2.6	3.2	4.0	4.4	5.0
32	1.1	1.7	2.2	3.0	4.0	4.7	5.1	5.7
36	1.2	2.0	2.6	3.5	4.5	5.2	6.0	7.1



IN THE INTEREST OF PRODUCT DEVELOPMENT, ARROW UNITED
RESERVES THE RIGHT TO MAKE CHANGES WITHOUT NOTICE.



Arrow United Industries
A Division of Mestek, Inc.
314 Riverside Drive • Wyalusing, PA 18853
Ph: (570)-746-1888 Fax: (570)-746-9286
www.arrowunited.com